

Product datasheet for **TA309644**

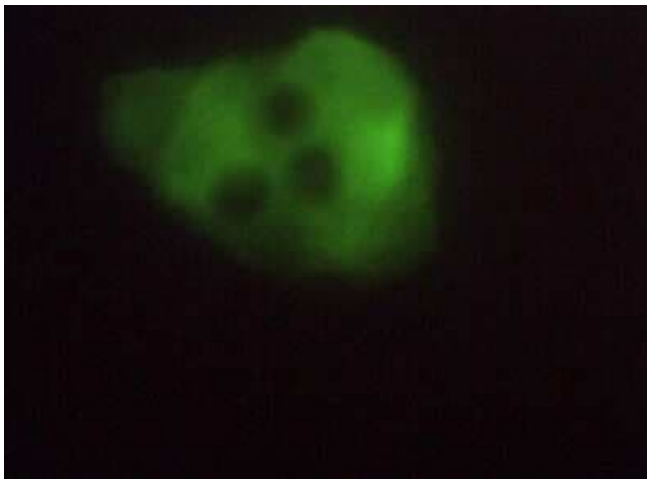
ERO1L (ERO1A) Rabbit Polyclonal Antibody

Product data:

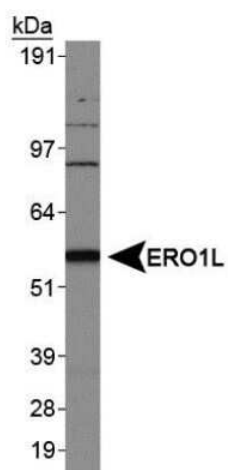
Product Type:	Primary Antibodies
Applications:	ICC/IF, WB
Recommended Dilution:	Immunocytochemistry/ Immunofluorescence: 1:50-1:200, Western Blot: 1:1000-1:2000
Reactivity:	Human, Mouse, Rat
Host:	Rabbit
Clonality:	Polyclonal
Immunogen:	A synthetic peptide made the the N-terminal region of the human protein. [UniProt Q96HE7]
Formulation:	Borate buffered saline + 1% BSA and
Concentration:	lot specific
Purification:	Affinity purified
Conjugation:	Unconjugated
Storage:	Store at -20°C as received.
Stability:	Stable for 12 months from date of receipt.
Gene Name:	endoplasmic reticulum oxidoreductase alpha
Database Link:	NP_055399 Entrez Gene 50527 Mouse Entrez Gene 171562 Rat Entrez Gene 30001 Human Q96HE7
Synonyms:	ERO1-alpha; ERO1-L; ERO1-L-alpha; Ero1 alpha; ERO1L; ERO1LA
Protein Pathways:	Vibrio cholerae infection



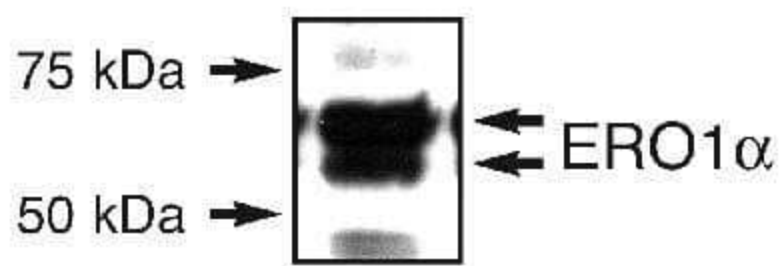
[View online »](#)

Product images:

Immunocytochemistry/Immunofluorescence:
ERO1L Antibody TA309644 - Detection of ERO1L
in HeLa cells.



Western Blot: ERO1L Antibody TA309644 -
Analysis of ERO1L in 293 cell lysates.



Western Blot: ERO1L Antibody TA309644 -
Detection of ERO1 alpha in an endogenous 293T
cell lysate.