

## Product datasheet for **TA309642**

### EPB41L3 Rabbit Polyclonal Antibody

#### Product data:

Product Type:	Primary Antibodies
Applications:	Simple Western, WB
Recommended Dilution:	Western Blot: 2 ug/ml, Simple Western: 1:50
Reactivity:	Human, Mouse, Rat, Xenopus
Host:	Rabbit
Clonality:	Polyclonal
Immunogen:	A synthetic peptide made to an internal region of the human protein (within residues 400-500). [Swiss-Prot# Q9Y2J2]
Formulation:	PBS, 30% glycerol and 0.1% Sodium Azide
Concentration:	lot specific
Purification:	Peptide affinity purified
Conjugation:	Unconjugated
Storage:	Store at -20°C as received.
Stability:	Stable for 12 months from date of receipt.
Gene Name:	erythrocyte membrane protein band 4.1 like 3
Database Link:	<a href="#">NP_036439</a> <a href="#">Entrez Gene 13823 Mouse</a> <a href="#">Entrez Gene 116724 Rat</a> <a href="#">Entrez Gene 23136 Human</a> <a href="#">Q9Y2J2</a>
Synonyms:	4.1B; DAL-1; DAL1
Protein Pathways:	Tight junction

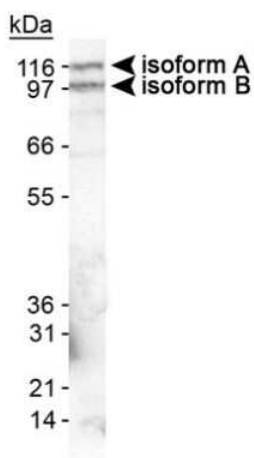


[View online »](#)

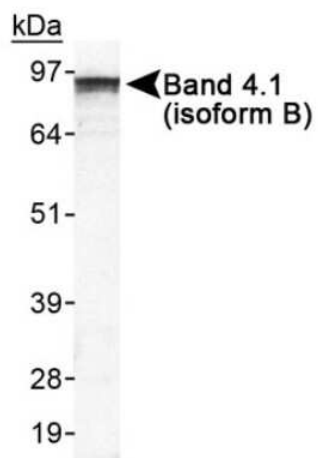
Product images:



Simple Western: EPB41L3 Antibody TA309642 - Simple Western lane view shows a specific band for EPB41L3 in 0.5 mg/ml of HeLa lysate. This experiment was performed under reducing conditions using the 12-230 kDa separation system.



Western Blot: EPB41L3 Antibody TA309642 - Detection of Band 4.1-like protein 3 in mouse brain lysate



Western Blot: EPB41L3 Antibody TA309642 -  
Detection of Band 4.1-like protein 3 in HeLa  
whole cell lysate