

## Product datasheet for **TA309641**

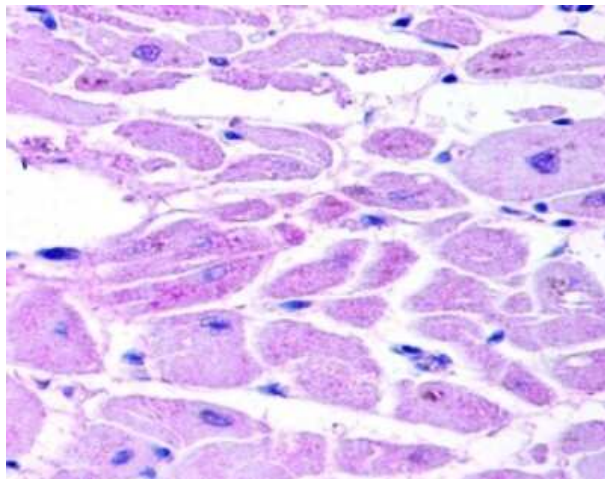
### HIF 2 alpha (EPAS1) Rabbit Polyclonal Antibody

#### Product data:

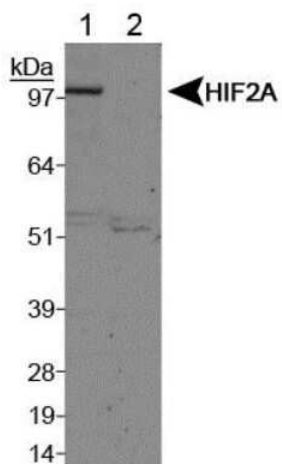
Product Type:	Primary Antibodies
Applications:	ChIP, ELISA, FC, ICC/IF, IHC, Immunoblotting, IP, SDS-PAGE, Simple Western, WB
Recommended Dilution:	Knockout Validated, In vitro assay, Knockdown Validated, Simple Western: 1:50, Flow Cytometry, ELISA: 1:100 - 1:2000, Immunohistochemistry: 1:100, Immunocytochemistry/Immunofluorescence: 1:100, Immunohistochemistry-Paraffin: 1:100, Immunohistochemistry-Frozen, Chromatin Immunoprecipitation (ChIP): 1:10-1:500, SDS-Page, Immunoprecipitation: 5 ug / 1 mg lysate, Gel Super Shift Assays, Western Blot: 1 - 2 ug/mL, Dual RNAscope ISH-IHC, Immunoblotting
Reactivity:	Fish, Human, Mouse, Rat
Host:	Rabbit
Clonality:	Polyclonal
Immunogen:	A peptide derived from the C-terminus of mouse/human HIF-2 alpha protein.
Formulation:	Tris-glycine, 150mM NaCl pH 7.5 and 0.05% Sodium Azide
Concentration:	lot specific
Purification:	Peptide affinity purified
Conjugation:	Unconjugated
Storage:	Store at -20°C as received.
Stability:	Stable for 12 months from date of receipt.
Gene Name:	endothelial PAS domain protein 1
Database Link:	<a href="#">NP_001421</a> <a href="#">Entrez Gene 13819 Mouse</a> <a href="#">Entrez Gene 29452 Rat</a> <a href="#">Entrez Gene 2034 Human</a> <a href="#">Q99814</a>
Synonyms:	bHLHe73; ECYT4; HIF2A; HLF; MOP2; PASD2
Protein Families:	Druggable Genome, Transcription Factors
Protein Pathways:	Pathways in cancer, Renal cell carcinoma



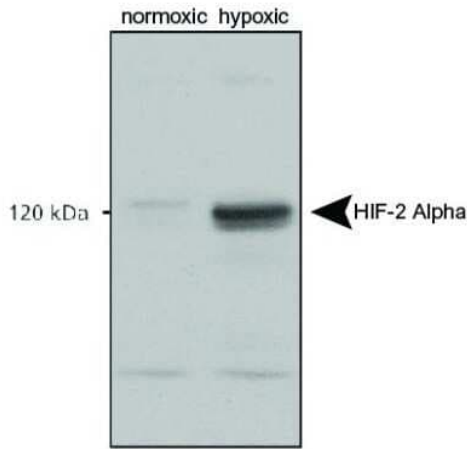
[View online »](#)

**Product images:**

HIF-2 alpha immunoreactivity in human cardiac myocytes stained with TA309641.



Lane 1: Cobalt chloride treated COS7 nuclear extracts. Lane 2: Untreated COS7 nuclear extracts.

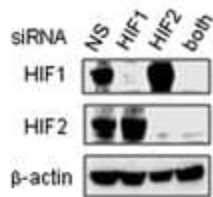


Analysis using the HRP conjugate of TA309641. Detection of normoxic and hypoxic nuclear rat cell lysates.

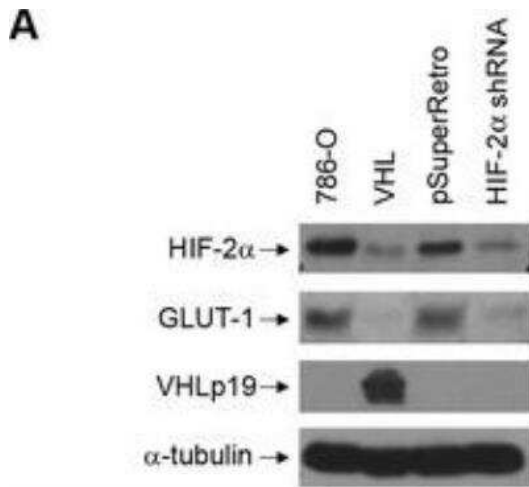


Image shows a specific band for HIF-2 alpha in 0.5 mg/mL of hypoxic HeLa lysate. This experiment was performed under reducing conditions using the 12-230 kDa separation system.

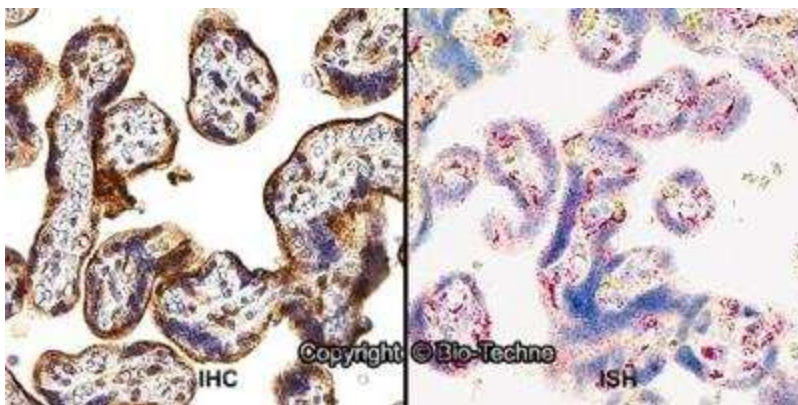
b



Sp1 and HIFs contribute to the synergistic activation of multiple genes in OVSAO cells under SSH.b) Activation of multiple genes under hypoxia is dependent on HIFs. Western blotting is also shown for HIFs. Data shown are the mean (n = 3) ± SD.



Reduction of HIF-2alpha levels leads to protection in UV-triggered apoptosis, but not for apoptosis caused by glucose and serum starvation in 786-O cells. Parental 786-O or those either stably expressing wild-type VHLp19 or stably infected with a control vector (pSuperRetro) or a pool of two HIF-2alpha shRNAs vectors [21] were grown to confluence and lysed. Cell alpha-tubulin.



Formalin-fixed paraffin-embedded tissue sections of human placenta were probed for HIF-2 alpha/EPAS1 mRNA (ACD RNAScope Probe, catalog #410598; Fast Red chromogen, ACD catalog # 322750). Adjacent tissue section was processed for immunohistochemistry using Rabbit Polyclonal (Novus Biologicals catalog # TA309641) at 1:100 dilution with one-hour incubation at room temperature followed by incubation with anti-rabbit IgG VisUCyte HRP Polymer Antibody (Catalog # VC003) and DAB chromogen (yellow-brown). Tissue was counterstained with hematoxylin (blue). Specific staining was localized to trophoblastic cells.