

Product datasheet for **TA309640**

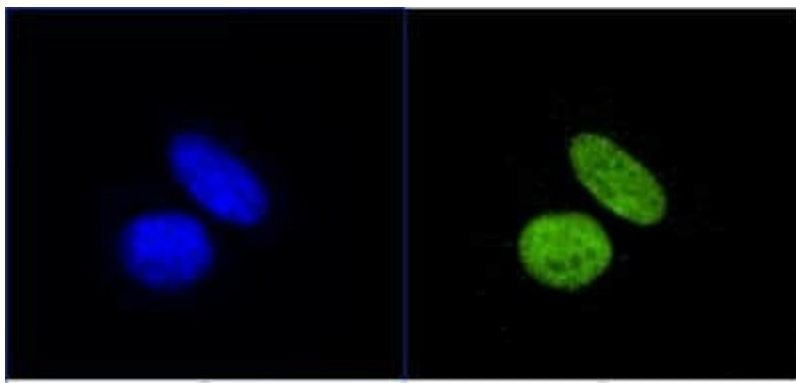
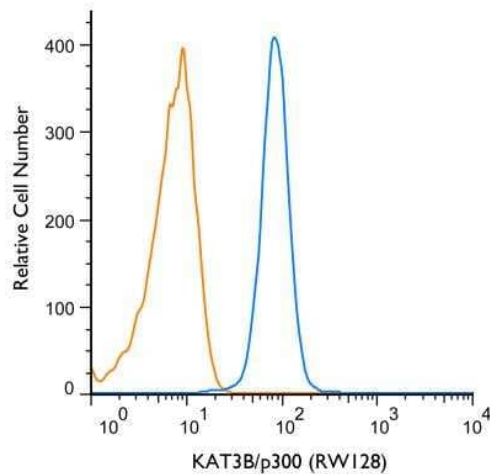
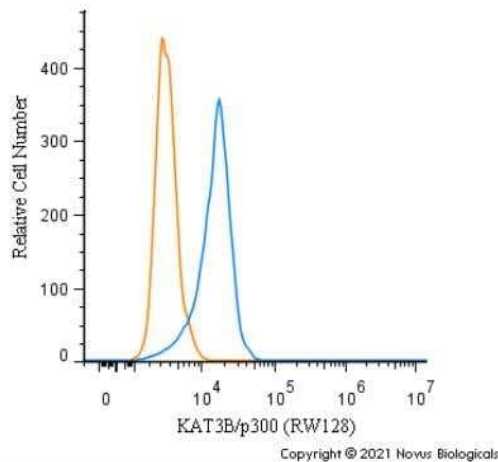
EP300 Mouse Monoclonal Antibody [Clone ID: RW128]

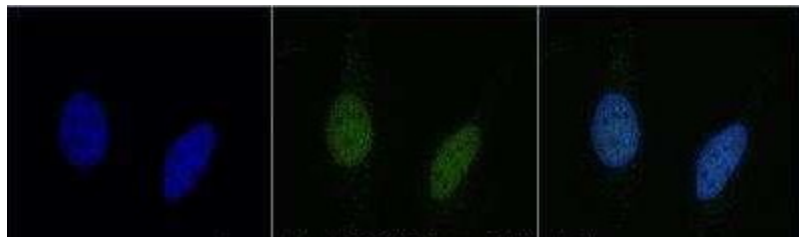
Product data:

| | |
|-----------------------|---|
| Product Type: | Primary Antibodies |
| Clone Name: | RW128 |
| Applications: | FC, IP, WB |
| Recommended Dilution: | Flow Cytometry, Western Blot: 1:250-1:500, Immunocytochemistry/ Immunofluorescence: 2-5ug/mL, Immunoprecipitation: 1:10-1:500, Flow (Intracellular): 1ug/mL |
| Reactivity: | Human, Mouse, Primate, Rat |
| Host: | Mouse |
| Isotype: | IgG1, kappa |
| Clonality: | Monoclonal |
| Immunogen: | Fusion protein containing residues 1572-2371 of human p300. |
| Formulation: | PBS [pH7.4] and 0.1% Sodium Azide |
| Concentration: | lot specific |
| Purification: | Protein A purified |
| Conjugation: | Unconjugated |
| Storage: | Store at -20°C as received. |
| Stability: | Stable for 12 months from date of receipt. |
| Gene Name: | E1A binding protein p300 |
| Database Link: | NP_001420 Entrez Gene 328572 MouseEntrez Gene 170915 RatEntrez Gene 2033 Human Q09472 |
| Synonyms: | KAT3B; p300; RSTS2 |
| Protein Families: | Druggable Genome, Transcription Factors |
| Protein Pathways: | Adherens junction, Cell cycle, Huntington's disease, Jak-STAT signaling pathway, Long-term potentiation, Melanogenesis, Notch signaling pathway, Pathways in cancer, Prostate cancer, Renal cell carcinoma, TGF-beta signaling pathway, Wnt signaling pathway |

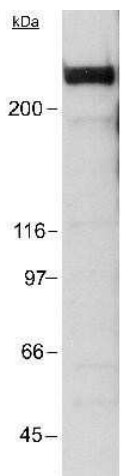
[View online »](#)

Product images:





Immunocytochemistry/Immunofluorescence: KAT3B/p300 Antibody (RW128) TA309640 - HeLa cells were fixed in 4% paraformaldehyde for 10 minutes and permeabilized in 0.5% Triton X-100 in PBS for 5 minutes. The cells were incubated with anti-KAT3B/p300 Antibody (RW128) TA309640 at 2 ug/ml overnight at 4C and detected with an anti-mouse Dylight 488 (Green) at a 1:1000 dilution for 60 minutes. Nuclei were counterstained with DAPI (Blue). Cells were imaged using a 100X objective and digitally deconvolved.



Western Blot: KAT3B/p300 Antibody (RW128) TA309640 - Detection of p300 in a HeLa nuclear extract using TA309640 (1:250). ECL: 15 sec exposure.