

Product datasheet for **TA309639**

Adropin (ENHO) Rabbit Polyclonal Antibody

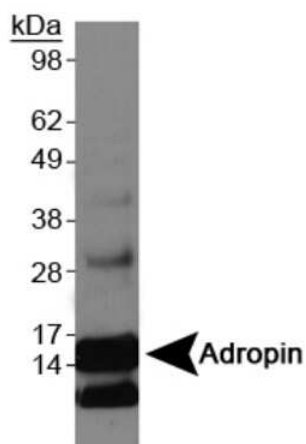
Product data:

Product Type:	Primary Antibodies
Applications:	WB
Recommended Dilution:	Western Blot: 2 ug/ml
Reactivity:	Bovine, Human, Mouse, Rat
Host:	Rabbit
Clonality:	Polyclonal
Immunogen:	Synthetic peptide made to an internal portion of the human protein (within residues 10-60). [Swiss-Prot# Q6UWT2]
Formulation:	PBS, 30% glycerol and 0.1% Sodium Azide
Concentration:	lot specific
Purification:	Peptide affinity purified
Conjugation:	Unconjugated
Storage:	Store at -20°C as received.
Stability:	Stable for 12 months from date of receipt.
Gene Name:	energy homeostasis associated
Database Link:	NP_940975 Entrez Gene 69638 MouseEntrez Gene 100912292 RatEntrez Gene 375704 Human Q6UWT2
Synonyms:	C9orf165; UNQ470
Protein Families:	Transmembrane

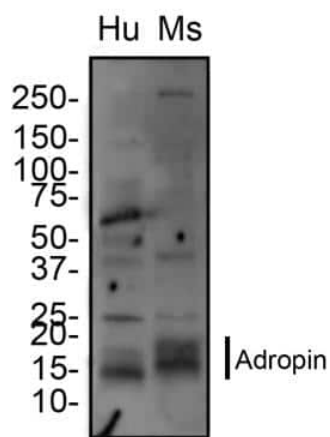


[View online »](#)

Product images:



Western Blot: Adropin Antibody TA309639 - Western blot on Adropin overexpression lysate.



Western Blot: Adropin Antibody TA309639 - Total protein from Human and Mouse brain was separated on a 4-20% gel by SDS-PAGE, transferred to PVDF membrane and blocked in 5% non-fat milk in TBST. The membrane was probed with 2.0 ug/mL anti-Adropin in 1% non-fat milk in TBST and detected with an anti-rabbit HRP secondary antibody using chemiluminescence.