

Product datasheet for **TA309635**

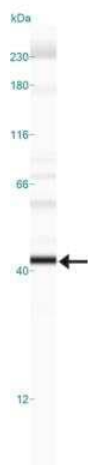
EGLN1 Mouse Monoclonal Antibody [Clone ID: 366G/76/3]

Product data:

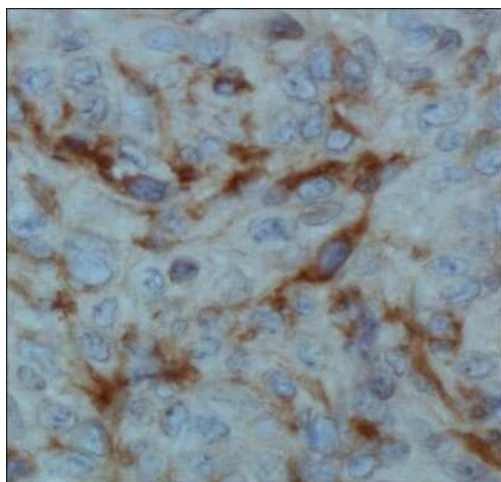
Product Type:	Primary Antibodies
Clone Name:	366G/76/3
Applications:	IHC, Simple Western, WB
Recommended Dilution:	Western Blot: 0.5 - 2.0 ug/mL, Immunohistochemistry: 1:400, Immunohistochemistry-Paraffin: 1:400, Simple Western: 1:50
Reactivity:	Human
Host:	Mouse
Isotype:	IgG1
Clonality:	Monoclonal
Immunogen:	A peptide within residues 1-50 of the human protein. [Swiss-Prot# Q9GZT9]
Formulation:	Tris-glycine, 150mM NaCl pH 7.5 and 0.05% Sodium Azide
Concentration:	lot specific
Purification:	Protein G purified
Conjugation:	Unconjugated
Storage:	Store at -20°C as received.
Stability:	Stable for 12 months from date of receipt.
Gene Name:	egl-9 family hypoxia inducible factor 1
Database Link:	NP_071334 Entrez Gene 54583 Human Q9GZT9
Synonyms:	C1orf12; ECYT3; HALAH; HIF-PH2; HIFPH2; HPH-2; HPH2; PHD2; SM20; ZMYND6
Protein Pathways:	Pathways in cancer, Renal cell carcinoma



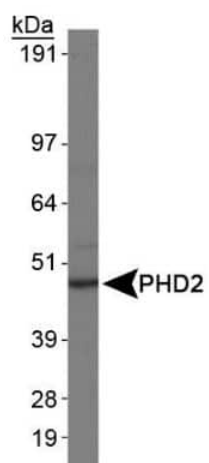
[View online »](#)

Product images:

Simple Western: EGLN1/PHD2 Antibody (366G/76/3) TA309635 - Lane view shows a specific band for EGLN1/PHD2 in 0.5 mg/mL of HeLa lysate. This experiment was performed under reducing conditions using the 12-230 kDa separation system.



Immunohistochemistry: EGLN1/PHD2 Antibody (366G/76/3) TA309635 - Analysis of PHD2 in human renal cancer using DAB with hematoxylin counterstain.



Western Blot: EGLN1/PHD2 Antibody (366G/76/3)
TA309635 - Analysis in HeLa whole cell extracts
using EGLN1/PHD2 antibody TA309635.