

## Product datasheet for **TA309634**

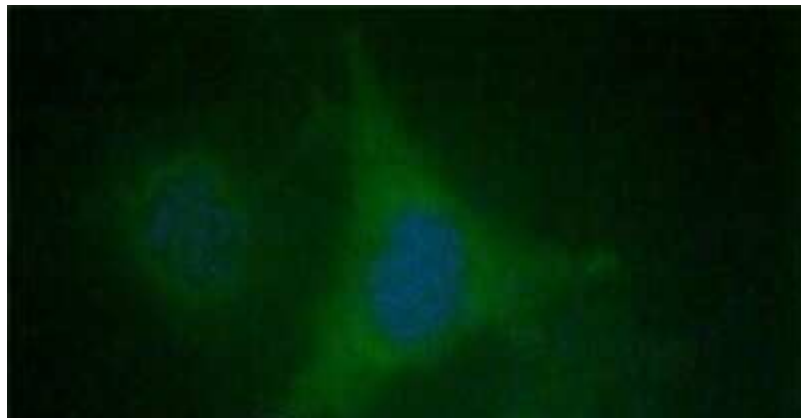
### EDIL3 Rabbit Polyclonal Antibody

#### Product data:

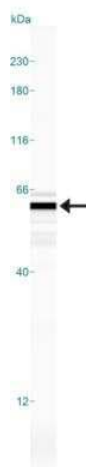
Product Type:	Primary Antibodies
Applications:	ICC/IF, Simple Western, WB
Recommended Dilution:	Immunocytochemistry/ Immunofluorescence: 1:100, Western Blot: 2 ug/ml, Simple Western: 1:20
Reactivity:	Human, Mouse
Host:	Rabbit
Clonality:	Polyclonal
Immunogen:	Synthetic peptide made to an internal portion of the human protein (within residues 200-350). [Swiss-Prot# O43854]
Formulation:	PBS, 30% glycerol and 0.1% Sodium Azide
Purification:	Peptide affinity purified
Conjugation:	Unconjugated
Storage:	Store at -20°C as received.
Stability:	Stable for 12 months from date of receipt.
Gene Name:	EGF like repeats and discoidin domains 3
Database Link:	<a href="#">NP_005702</a> <a href="#">Entrez Gene 13612 Mouse</a> <a href="#">Entrez Gene 10085 Human</a> <a href="#">O43854</a>
Synonyms:	DEL1
Protein Families:	Druggable Genome, Secreted Protein



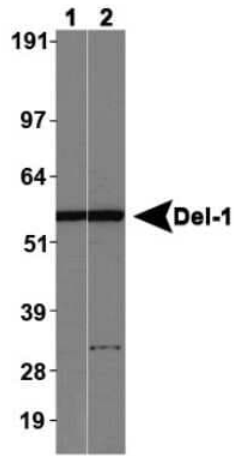
[View online »](#)

**Product images:**

Immunocytochemistry/Immunofluorescence:  
EDIL3/DEL1 Antibody TA309634 - HeLa cells  
stained TA309634 (Green) detected with DyLight  
Fluor 488 conjugated anti-rabbit IgG secondary  
antibody. Nuclei are counterstained with Hoechst  
33258 (Blue).



Simple Western: EDIL3/DEL1 Antibody TA309634  
- Simple Western lane view shows a specific band  
for EDIL3/DEL1 in 0.5 mg/ml of Human Brain  
lysate. This experiment was performed under  
reducing conditions using the 12-230 kDa  
separation system.



Western Blot: EDIL3/DEL1 Antibody TA309634 -  
Lane 1: Western blot on normal human brain,  
Lane 2: Western blot on normal mouse brain.