

Product datasheet for **TA309633**

DYRK2 Rabbit Polyclonal Antibody

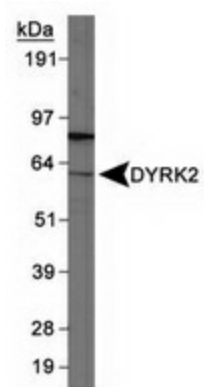
Product data:

Product Type:	Primary Antibodies
Applications:	WB
Recommended Dilution:	WB
Reactivity:	Chicken, Human, Zebrafish
Host:	Rabbit
Clonality:	Polyclonal
Immunogen:	Synthetic peptide made to an internal portion of the human protein (within residues 400-500). [Swiss-Prot# Q92630]
Formulation:	Tris-citrate/phosphate, pH 7-8 and 0.1% Sodium Azide
Concentration:	lot specific
Purification:	Peptide affinity purified
Conjugation:	Unconjugated
Storage:	Store at -20°C as received.
Stability:	Stable for 12 months from date of receipt.
Gene Name:	dual specificity tyrosine phosphorylation regulated kinase 2
Database Link:	NP_003574 Entrez Gene 8445 Human Q92630
Synonyms:	FLJ21217; FLJ21365
Protein Families:	Druggable Genome, Protein Kinase



[View online »](#)

Product images:



Detection of DYRK2 in 293 whole cell lysates using anti-DYRK2.