

## Product datasheet for **TA309628**

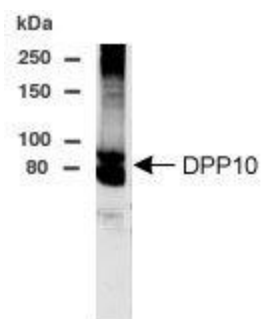
### DPP10 Rabbit Polyclonal Antibody

#### Product data:

Product Type:	Primary Antibodies
Applications:	WB
Recommended Dilution:	WB
Reactivity:	Human
Host:	Rabbit
Clonality:	Polyclonal
Immunogen:	A synthetic peptide made to residues 521-539 of human DPP10.
Formulation:	PBS and 0.02% Sodium Azide
Concentration:	lot specific
Purification:	Affinity purified
Conjugation:	Unconjugated
Storage:	Store at -20°C as received.
Stability:	Stable for 12 months from date of receipt.
Gene Name:	dipeptidyl peptidase like 10
Database Link:	<a href="#">NP_065919</a> <a href="#">Entrez Gene 57628 Human</a> <a href="#">Q8N608</a>
Synonyms:	DPL2; DPPY; DPRP-3; DPRP3
Protein Families:	Druggable Genome, Protease, Transmembrane



[View online »](#)

**Product images:**

Detection of Flag-DPP10 in transfected CHO cells using anti-DPP10 at a 1:1,000 dilution. The expected MW is 75 kDa; however, oligomerization and differential glycosylation produces other bands as observed with other DPP family members.