

Product datasheet for **TA309626**

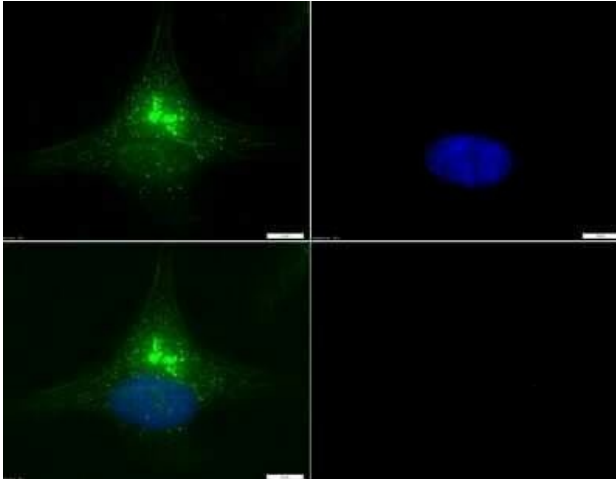
Dicer (DICER1) Rabbit Polyclonal Antibody

Product data:

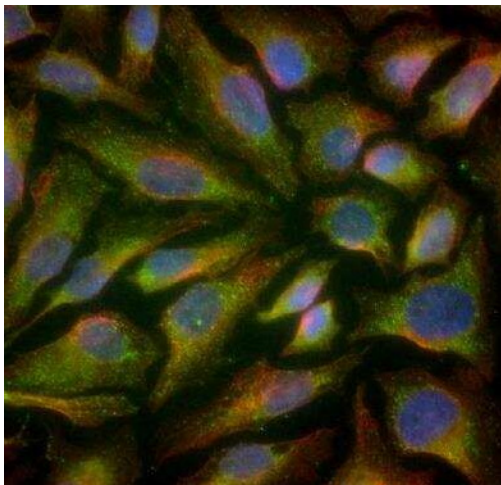
Product Type:	Primary Antibodies
Applications:	ICC/IF, IHC, WB
Recommended Dilution:	Immunocytochemistry/ Immunofluorescence: 2-5 ug/ml, Western Blot: 2.0 ug/ml, Immunohistochemistry: 1:50-1:100, Immunohistochemistry-Paraffin: 1:50-1:100
Reactivity:	Human, Mouse
Host:	Rabbit
Clonality:	Polyclonal
Immunogen:	A genomic peptide made to an internal region of the human DICER1 protein (within residues 1100-1300). [Swiss-Prot Q9UPY3]
Formulation:	PBS, 0.1% BSA, 50% glycerol and 0.05% Sodium Azide
Concentration:	lot specific
Purification:	Affinity purified
Conjugation:	Unconjugated
Storage:	Store at -20°C as received.
Stability:	Stable for 12 months from date of receipt.
Gene Name:	dicer 1, ribonuclease III
Database Link:	NP_803187 Entrez Gene 192119 Mouse Entrez Gene 23405 Human Q9UPY3
Synonyms:	DCR1; Dicer; Dicer1e; HERNA; K12H4.8-LIKE; MNG1; RMSE2
Protein Families:	Druggable Genome



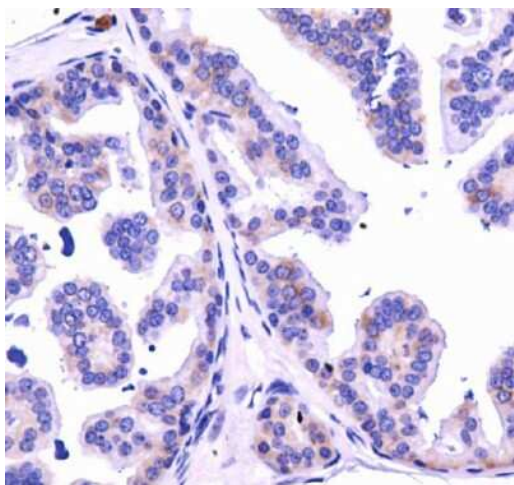
[View online »](#)

Product images:

Immunocytochemistry/Immunofluorescence:
Dicer Antibody TA309626 - Dicer antibody was tested in HeLa cells with DyLight 488 (green). Nuclei were counterstained with DAPI (blue).



Immunocytochemistry/Immunofluorescence:
Dicer Antibody TA309626 - HeLa cells were fixed for 10 minutes using 10% formalin and then permeabilized for 5 minutes using 1X PBS + 0.05% Triton-X100. The cells were incubated with anti-Dicer at 2 ug/ml overnight at 4C and detected with an anti-rabbit Dylight 488 (Green) at a 1:500 dilution. Alpha tubulin (DM1A) NB100-690 was used as a co-stain at a 1:1000 dilution and detected with an anti-mouse Dylight 550 (Red) at a 1:500 dilution. Nuclei were counterstained with DAPI (Blue). Cells were imaged using a 40X objective.



Immunohistochemistry: Dicer Antibody
TA309626 - Staining of Dicer in mouse prostate
using DAB with hematoxylin counterstain.