

Product datasheet for **TA309623**

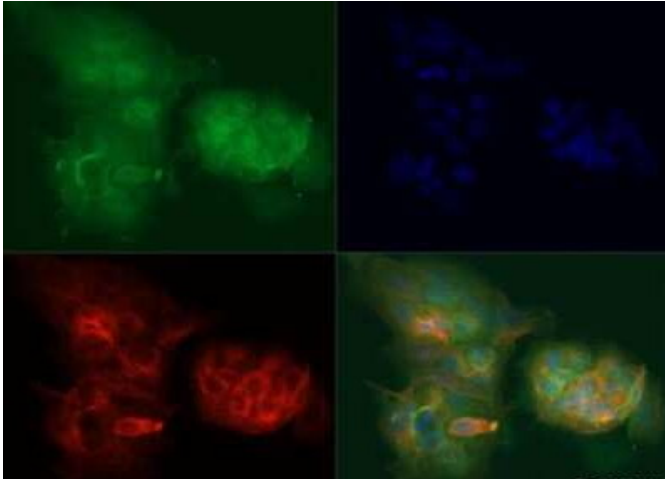
DEPTOR Rabbit Polyclonal Antibody

Product data:

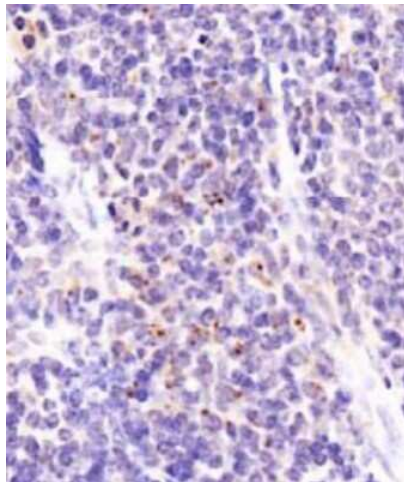
Product Type:	Primary Antibodies
Applications:	ICC/IF, IHC, WB
Recommended Dilution:	Western Blot: 1:1000, Immunohistochemistry-Paraffin: 1:100, Immunohistochemistry: 1:100, Immunocytochemistry/ Immunofluorescence: 1:100, Knockout Validated
Reactivity:	Human, Mouse
Host:	Rabbit
Clonality:	Polyclonal
Immunogen:	A genomic peptide made to an internal region of the human DEPDC6 protein (within residues 10-200). [Swiss-Prot Q8TB45]
Formulation:	PBS and 0.02% Sodium Azide
Concentration:	lot specific
Purification:	Affinity purified
Conjugation:	Unconjugated
Storage:	Store at -20°C as received.
Stability:	Stable for 12 months from date of receipt.
Gene Name:	DEP domain containing MTOR-interacting protein
Database Link:	NP_073620 Entrez Gene 97998 Mouse Entrez Gene 64798 Human Q8TB45
Synonyms:	DEP.6; DEPDC6



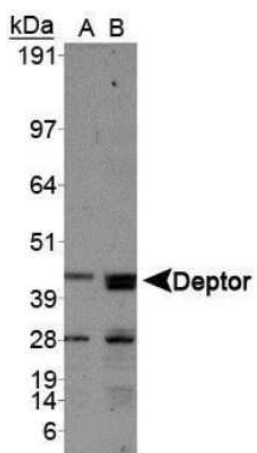
[View online »](#)

Product images:

Immunocytochemistry/Immunofluorescence: DEPTOR/DEPDC6 Antibody - BSA Free TA309623 - Antibody was tested in MCF7 cells with DyLight 488 (green). Nuclei and alpha-tubulin were counterstained with DAPI (blue) and DyLight 550 (red).



Immunohistochemistry: DEPTOR/DEPDC6 Antibody - BSA Free TA309623 - Staining of DEPTOR in mouse spleen using DAB with a hematoxylin counterstain.



Western Blot: DEPTOR/DEPDC6 Antibody - BSA Free TA309623 - Analysis of DEPDC6 in (A) human liver and (B) mouse liver.