

Product datasheet for **TA309617**

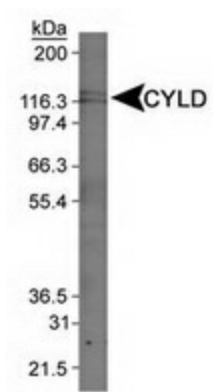
CYLD Rabbit Polyclonal Antibody

Product data:

Product Type:	Primary Antibodies
Applications:	WB
Recommended Dilution:	WB
Reactivity:	Bovine, Human, Mouse, Primate
Host:	Rabbit
Clonality:	Polyclonal
Immunogen:	Synthetic peptide made to an internal portion of the human protein (within residues 500-600). [Swiss-Prot# Q9NQC7]
Formulation:	Tris-citrate/phosphate, pH 7-8 and 0.1% Sodium Azide
Concentration:	lot specific
Purification:	Peptide affinity purified
Conjugation:	Unconjugated
Storage:	Store at -20°C as received.
Stability:	Stable for 12 months from date of receipt.
Gene Name:	CYLD lysine 63 deubiquitinase
Database Link:	NP_056062 Entrez Gene 74256 Mouse Entrez Gene 1540 Human Q9NQC7
Synonyms:	BRSS; CDMT; CYLD1; CYLDI; EAC; MFT; MFT1; SBS; TEM; USPL2
Protein Families:	Druggable Genome
Protein Pathways:	RIG-I-like receptor signaling pathway



[View online »](#)

Product images:

Detection of CYLD in Jurkat whole cell extract using anti-CYLD.