

## Product datasheet for **TA309615**

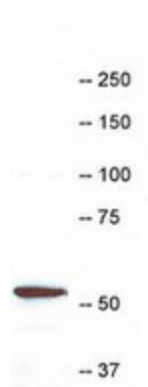
### Coronin 1a (CORO1A) Rabbit Polyclonal Antibody

#### Product data:

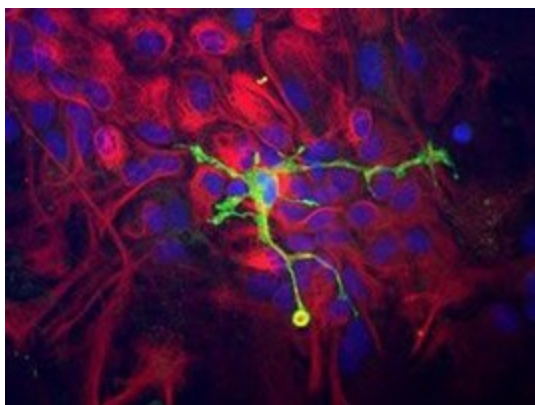
Product Type:	Primary Antibodies
Applications:	IF, WB
Recommended Dilution:	WB, IF, ICC
Reactivity:	Human, Rat
Host:	Rabbit
Clonality:	Polyclonal
Immunogen:	This antibody was made against full length recombinant Coronin 1a expressed in and purified from E. coli.
Purification:	Whole antisera
Conjugation:	Unconjugated
Storage:	Store at -20°C as received.
Stability:	Stable for 12 months from date of receipt.
Gene Name:	coronin 1A
Database Link:	<a href="#">NP_009005</a> <a href="#">Entrez Gene 155151 Rat</a> <a href="#">Entrez Gene 11151 Human</a> <a href="#">P31146</a>
Synonyms:	CLABP; CLIPINA; HCORO1; IMD8; p57; TACO



[View online »](#)

**Product images:**

Western Blot: Coronin 1a Antibody - Western blot of HL60 Cell extract stained with RPCA-Cor1a, at dilution of 1:10,000. A prominent band running with an apparent SDS-PAGE molecular weight of ~57kDa corresponds to Coronin 1a. Numbers represent positions of molecular weight standards in kDa.



Immunocytochemistry: Coronin 1a Antibody - Immunocytochemistry of a mixed neuron/glia culture from newborn rat brain stained with anti-Coronin 1a (green) at a dilution of 1:10,000 and anti-Vimentin (1:5,000). Blue is nuclear DNA counter stain. Glial cells and fibroblasts stain with vimentin, while microglia alone stain strongly and specifically for Coronin 1a, which can therefore be used as a robust marker of this important cell type.