

Product datasheet for **TA309611**

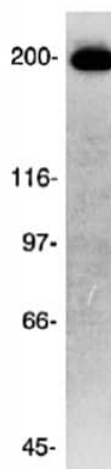
ch TOG (CKAP5) Rabbit Polyclonal Antibody

Product data:

Product Type:	Primary Antibodies
Applications:	ICC/IF, IP, WB
Recommended Dilution:	Immunoprecipitation: 1:10-1:500, Western Blot: 1:1000, Immunocytochemistry/ Immunofluorescence: 1:1000
Reactivity:	Human, Mammalian, Mouse, Rat
Host:	Rabbit
Clonality:	Polyclonal
Immunogen:	Produced by immunizing rabbits with a recombinant segment of the C-terminal domain of the human protein.
Purification:	Whole antisera
Conjugation:	Unconjugated
Storage:	Store at -20°C as received.
Stability:	Stable for 12 months from date of receipt.
Gene Name:	cytoskeleton associated protein 5
Database Link:	NP_055571 Entrez Gene 75786 Mouse Entrez Gene 311191 Rat Entrez Gene 9793 Human Q14008
Synonyms:	ch-TOG; CHTOG; MSPS; TOG; TOGp
Protein Families:	Druggable Genome



[View online »](#)

Product images:

Western Blot: ch-TOG Antibody TA309611 - Specificity of polyclonal antibodies against ch-TOGp. Total cell protein (50 mg) from human HeLa cells was immunoblotted with a rabbit polyclonal serum generated against the C-terminal 301 amino acids of the ch-TOGp.