

## Product datasheet for **TA309610**

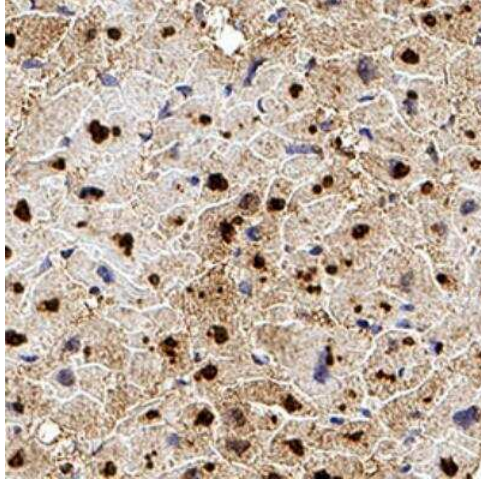
### **CITED4 Mouse Monoclonal Antibody [Clone ID: HT13-2D6.3]**

#### **Product data:**

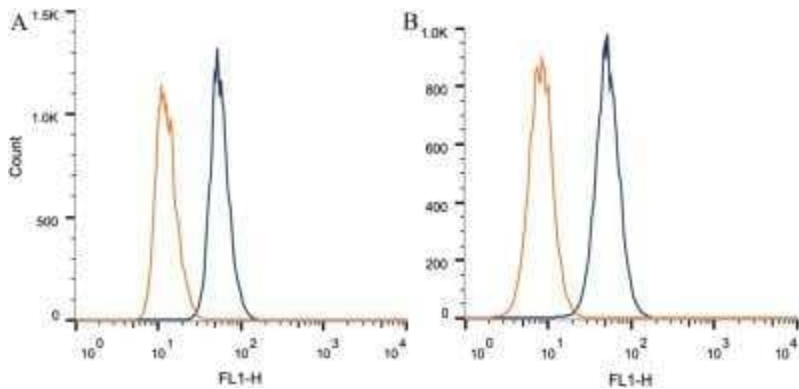
<b>Product Type:</b>	Primary Antibodies
<b>Clone Name:</b>	HT13-2D6.3
<b>Applications:</b>	ELISA, FC, ICC/IF, IHC, IP, WB
<b>Recommended Dilution:</b>	Immunohistochemistry-Paraffin, Flow Cytometry: 1 ug per million cells, ELISA: 1:100-1:2000, Immunocytochemistry/ Immunofluorescence: 1:10-1:500, Immunoprecipitation: 1:10-1:500, Western Blot: 1:100-1:2000, Immunohistochemistry
<b>Reactivity:</b>	Human
<b>Host:</b>	Mouse
<b>Isotype:</b>	IgG1, kappa
<b>Clonality:</b>	Monoclonal
<b>Immunogen:</b>	N-terminal fusion protein to full-length human CITED4.
<b>Formulation:</b>	Tris-glycine, 150mM NaCl and 0.05% Sodium Azide
<b>Concentration:</b>	lot specific
<b>Purification:</b>	IgG purified
<b>Conjugation:</b>	Unconjugated
<b>Storage:</b>	Store at -20°C as received.
<b>Stability:</b>	Stable for 12 months from date of receipt.
<b>Gene Name:</b>	Cbp/p300 interacting transactivator with Glu/Asp rich carboxy-terminal domain 4
<b>Database Link:</b>	<a href="#">NP_597724</a> <a href="#">Entrez Gene 163732 Human</a> <a href="#">Q96RK1</a>
<b>Synonyms:</b>	4; Asp-rich carboxy-terminal domain; Cbp; OTTHUMP00000009206; p300-interacting transactivator; transcriptional co-activator 4; with Glu
<b>Protein Families:</b>	Transcription Factors



[View online »](#)

**Product images:**

Immunohistochemistry-Paraffin: CITED4 Antibody (HT13-2D6.3) TA309610 - CITED4 was detected in immersion fixed paraffin-embedded sections of human heart using Mouse Anti-Human CITED4 (HT13-2D6.3) Monoclonal Antibody (Catalog # TA309610) at 1:300 for 1 hour at room temperature followed by incubation with the Anti-Mouse IgG VisUCyte™ HRP Polymer Antibody (Catalog # VC001). Tissue was stained using DAB (brown) and counterstained with hematoxylin (blue). Specific staining was localized to the cytoplasm in cardiomyocytes.



Flow Cytometry: CITED4 Antibody (HT13-2D6.3) TA309610 - Intracellular flow cytometric staining of  $1 \times 10^6$  CHO (A) and HEK-293 (B) cells using CITED4 antibody (dark blue). Isotype control shown in orange. An antibody concentration of  $1 \mu\text{g}/1 \times 10^6$  cells was used.