

## Product datasheet for **TA309609**

### Capicua (CIC) Rabbit Polyclonal Antibody

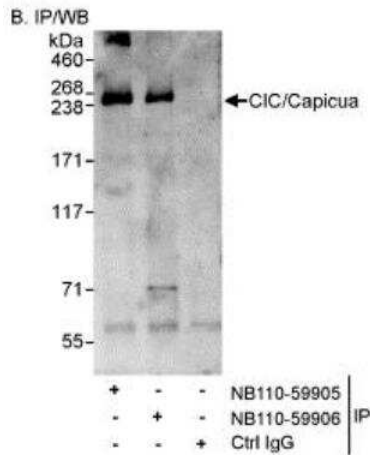
#### Product data:

Product Type:	Primary Antibodies
Applications:	ICC/IF, IP, WB
Recommended Dilution:	Western Blot: 1:1000-1:2500, Immunocytochemistry/ Immunofluorescence: 1:50, Immunoprecipitation: 2-5 ug/mg lysate, Knockout Validated
Reactivity:	Canine, Human, Mouse, Rat
Host:	Rabbit
Clonality:	Polyclonal
Immunogen:	The epitope recognized by this antibody maps to a C-terminal region within residue 1500-1608 of human Capicua. [NCBI# NP_055940.3]
Formulation:	Tris-citrate/phosphate buffer, pH 7 to 8 and 0.09% Sodium Azide
Concentration:	lot specific
Purification:	Immunogen affinity purified
Conjugation:	Unconjugated
Storage:	Store at -20°C as received.
Stability:	Stable for 12 months from date of receipt.
Gene Name:	capicua transcriptional repressor
Database Link:	<a href="#">NP_055940</a> <a href="#">Entrez Gene 71722 Mouse</a> <a href="#">Entrez Gene 308435 Rat</a> <a href="#">Entrez Gene 23152 Human</a> <a href="#">Q96RK0</a>
Synonyms:	KIAA0306

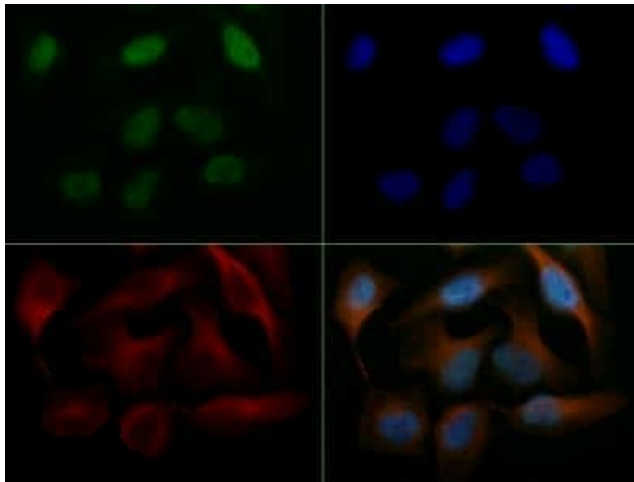


[View online »](#)

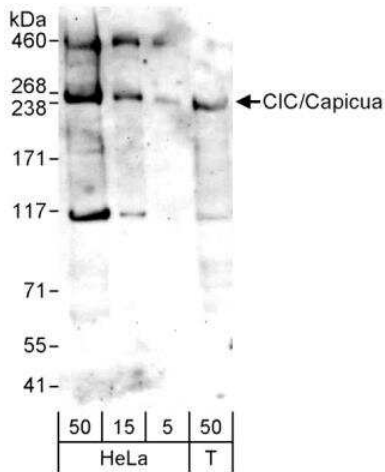
Product images:



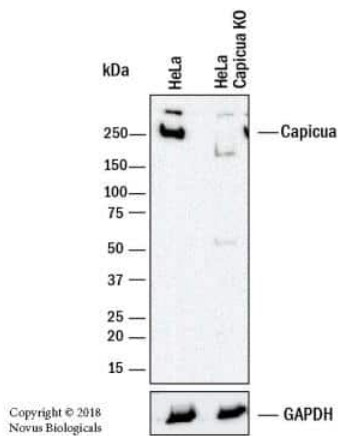
Immunoprecipitation: Capicua Antibody TA309609 - Detection of Human Capicua/CIC in 1 mg of whole cell lysate from HeLa cells (20% of IP loaded) using affinity purified rabbit polyclonal Capicua antibody (TA309609) at a concentration of 3 ug/mg lysate. Capicua/CIC was immunoprecipitated by NB110-59905 also, which recognizes an upstream epitope. Detection: Chemiluminescence with exposure times of 3 minutes.



Immunocytochemistry/Immunofluorescence: Capicua Antibody TA309609 - HeLa cells were fixed for 10 minutes using 10% formalin and then permeabilized for 5 minutes using 1X TBS + 0.5% Triton X-100. The cells were incubated with anti-Capicua at 5 ug/ml overnight at 4C and detected with an anti-rabbit DyLight 488 (Green) at a 1:500 dilution. Alpha tubulin (DM1A) NB100-690 was used as a co-stain at a 1:1000 dilution and detected with an anti-mouse DyLight 550 (Red) at a 1:500 dilution. Nuclei were counterstained with DAPI (Blue). Cells were imaged using a 40X objective.



Western Blot: Capicua Antibody TA309609 - WB detection of Human Capicua /CIC in whole cell lysates of HeLa (5, 15 and 50 ug ) and 293T (T, 50 ug) cells using affinity purified rabbit Capicua antibody TA309609 used at 1 ug/ml concentration.



Knockout Validated: Capicua Antibody TA309609 - Western blot shows lysates of HeLa human cervical epithelial carcinoma parental cell line and Capicua knockout (KO) HeLa cell line. PVDF membrane was probed with 1:1000 of Rabbit Anti-Human Capicua Polyclonal Antibody (Catalog# TA309609) followed by HRP-conjugated Anti-Rabbit IgG Secondary Antibody (Catalog# HAF008). Specific band was detected for Capicua at approximately 250 kDa in the parental HeLa cell line, but is not detectable in the knockout HeLa cell line. This experiment was conducted under reducing conditions.