

## Product datasheet for **TA309607**

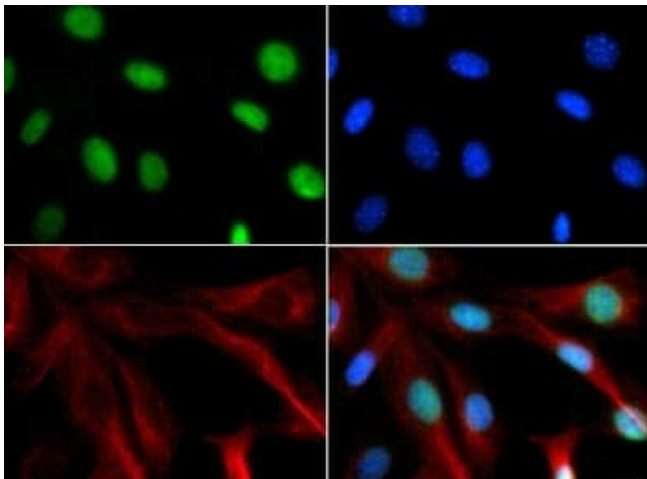
### CHD7 Rabbit Polyclonal Antibody

#### Product data:

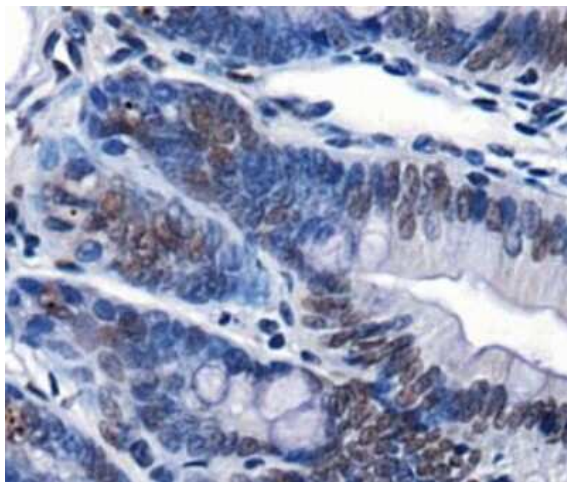
Product Type:	Primary Antibodies
Applications:	ICC/IF, IHC, WB
Recommended Dilution:	Immunohistochemistry-Paraffin: 1:250, Immunohistochemistry: 1:250, Immunocytochemistry/ Immunofluorescence: 1:100, Western Blot: 1:2500
Reactivity:	Human, Mouse
Host:	Rabbit
Clonality:	Polyclonal
Immunogen:	A genomic peptide made to an N-terminal region of the human CHD7 protein (within residues 25-200). [Swiss-Prot Q9P2D1]
Formulation:	PBS, 30% glycerol and 0.05% Sodium Azide
Concentration:	lot specific
Purification:	Affinity purified
Conjugation:	Unconjugated
Storage:	Store at -20°C as received.
Stability:	Stable for 12 months from date of receipt.
Gene Name:	chromodomain helicase DNA binding protein 7
Database Link:	<a href="#">NP_060250</a> <a href="#">Entrez Gene 320790 Mouse</a> <a href="#">Entrez Gene 55636 Human</a> <a href="#">Q9P2D1</a>
Synonyms:	CRG; HH5; IS3; KAL5

[View online »](#)

## Product images:



Immunocytochemistry/Immunofluorescence: Chd7 Antibody TA309607 - Antibody was tested in NIH/3T3 cells with FITC (green). Nuclei and actin were counterstained with Dapi (blue) and Phalloidin (red).



Immunohistochemistry: Chd7 Antibody TA309607 - IHC analysis of CHD7 in mouse intestine using DAB with hematoxylin counterstain.