

Product datasheet for **TA309606**

CAF1 (CHAF1A) Mouse Monoclonal Antibody [Clone ID: SS 1 1-13]

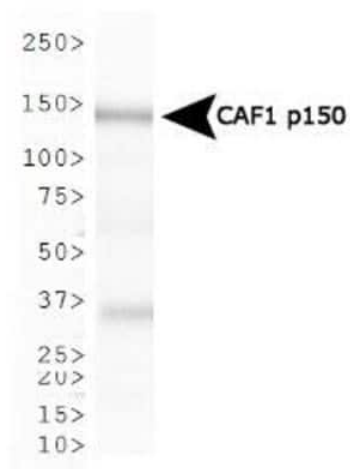
Product data:

Product Type:	Primary Antibodies
Clone Name:	SS 1 1-13
Applications:	ICC/IF, IP, WB
Recommended Dilution:	Immunocytochemistry/ Immunofluorescence: 1:10-1:2000, Immunoprecipitation: 1:10-1:500, Western Blot: 1:500-1:1000
Reactivity:	Human
Host:	Mouse
Isotype:	IgG1
Clonality:	Monoclonal
Immunogen:	Recombinant human CAF-1p150.
Formulation:	0.1% Sodium Azide
Concentration:	lot specific
Purification:	Ascites
Conjugation:	Unconjugated
Storage:	Store at -20°C as received.
Stability:	Stable for 12 months from date of receipt.
Gene Name:	chromatin assembly factor 1 subunit A
Database Link:	NP_005474 Entrez Gene 10036 Human Q13111
Synonyms:	CAF-1; CAF1; CAF1B; CAF1P150; P150
Protein Families:	Stem cell - Pluripotency, Transcription Factors



[View online »](#)

Product images:



Western Blot: CHAF1A Antibody (SS 1 1-13)
TA309606 - Analysis of CAF1 p150 expression in
Ntera2 whole cell lysate using TA309606.