

Product datasheet for **TA309605**

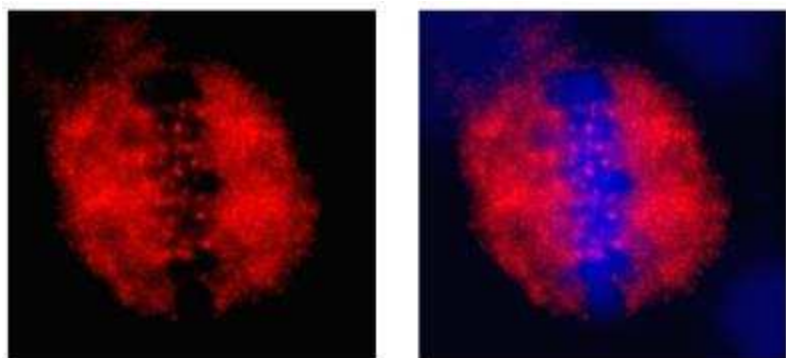
CENPF Rabbit Polyclonal Antibody

Product data:

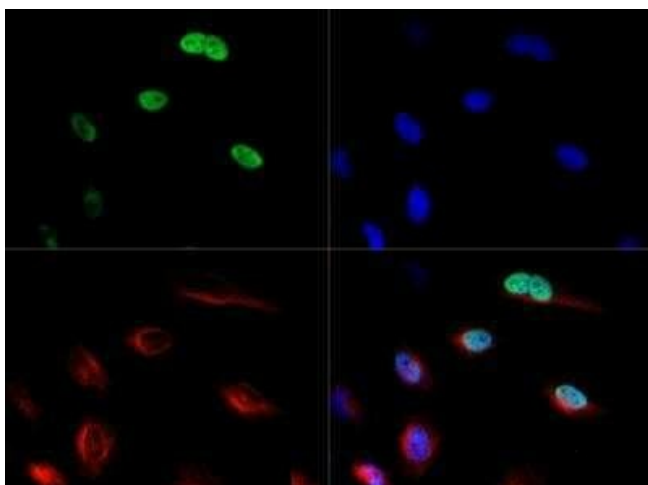
| | |
|-----------------------|--|
| Product Type: | Primary Antibodies |
| Applications: | FC, IHC, IP, WB |
| Recommended Dilution: | Knockdown Validated, Immunohistochemistry-Paraffin, Immunoprecipitation: 1:50, Western Blot: 1:1500-1:2500, Flow Cytometry: 1:50-1:200, Immunohistochemistry, Immunohistochemistry Whole-Mount, Immunocytochemistry/ Immunofluorescence: 1:200-1:1000immunoprecipitation 1:50, Immunohistochemistry-Frozen |
| Reactivity: | Human |
| Host: | Rabbit |
| Clonality: | Polyclonal |
| Immunogen: | A bacterial fusion protein from the C-terminus of CENP-F. |
| Formulation: | PBS with 50% glycerol and 0.05% Sodium Azide |
| Concentration: | lot specific |
| Purification: | Affinity purified |
| Conjugation: | Unconjugated |
| Storage: | Store at -20°C as received. |
| Stability: | Stable for 12 months from date of receipt. |
| Gene Name: | centromere protein F |
| Database Link: | NP_057427 Entrez Gene 1063 Human P49454 |
| Synonyms: | CENF; hcp-1; PRO1779 |
| Protein Families: | Druggable Genome |



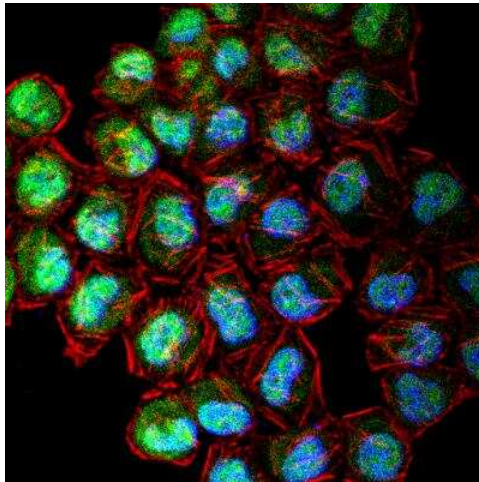
[View online »](#)

Product images:

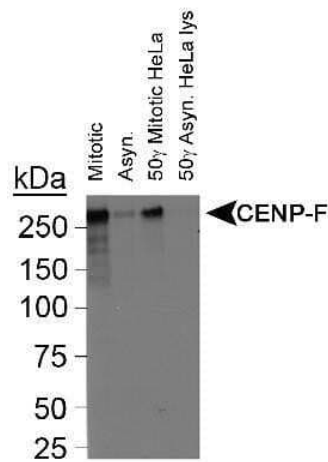
Immunocytochemistry/Immunofluorescence:
CENPF Antibody TA309605 - Distribution of CENPF (red), largely associated with the mitotic spindle and a clearly distinguishable frac.



Immunocytochemistry/Immunofluorescence:
CENPF Antibody TA309605 - CENPF antibody was tested in HeLa cells with Dylight 488 (green). Nuclei and alpha-tubulin were counterstained with DAPI (blue) and Dylight 550 (red).



Immunocytochemistry/Immunofluorescence: CENPF Antibody TA309605 - Confocal immunofluorescent analysis of HeLa cells using CENPF antibody (TA309605, 1:5). An Alexa Fluor 488-conjugated Goat to rabbit IgG was used as secondary antibody (green, A). Actin filaments were labeled with Alexa Fluor 568 phalloidin (red, B). DAPI was used to stain the cell nuclei (blue, C).



Western Blot: CENPF Antibody TA309605 - 25ug of asynchronous and mitotically blocked HeLa lysates were loaded in each respective lane.