

Product datasheet for **TA309604**

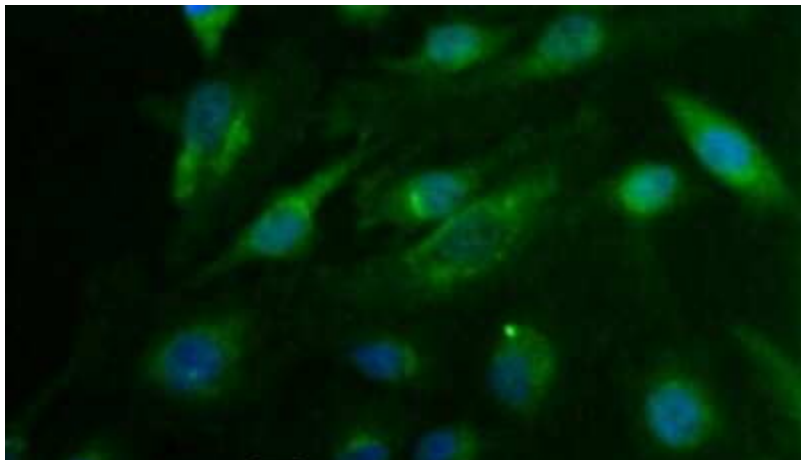
CDX1 Rabbit Polyclonal Antibody

Product data:

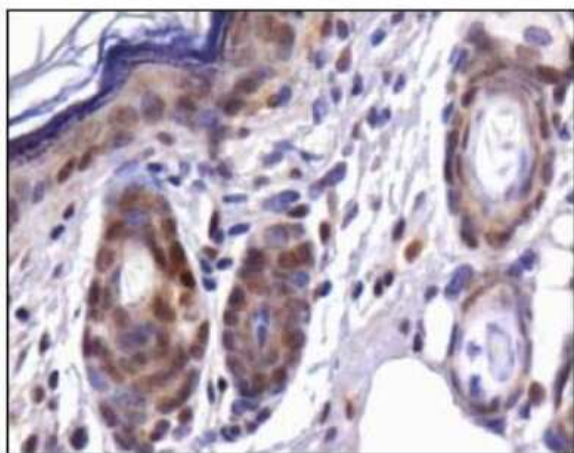
Product Type:	Primary Antibodies
Applications:	ICC/IF, IHC
Recommended Dilution:	Immunohistochemistry: 1:200, Immunocytochemistry/ Immunofluorescence: 1:100, Immunohistochemistry-Paraffin: 1:200
Reactivity:	Human, Mouse
Host:	Rabbit
Clonality:	Polyclonal
Immunogen:	A genomic peptide made to an internal region of the human Cdx1 protein (within residues 30-150). [Swiss-Prot P47902]
Formulation:	PBS, 30% glycerol and 0.05% Sodium Azide
Concentration:	lot specific
Purification:	Affinity purified
Conjugation:	Unconjugated
Storage:	Store at -20°C as received.
Stability:	Stable for 12 months from date of receipt.
Gene Name:	caudal type homeobox 1
Database Link:	NP_001795 Entrez Gene 12590 Mouse Entrez Gene 1044 Human P47902
Synonyms:	MGC116915
Protein Families:	Transcription Factors



[View online »](#)

Product images:

Immunocytochemistry/Immunofluorescence:
Cdx1 Antibody TA309604 - HeLa cells using
TA309604. Nuclei (Blue) are counterstained using
Hoechst 33258.



Immunohistochemistry: Cdx1 Antibody TA309604
- Analysis of CDX1 in mouse skin