

Product datasheet for **TA309603**

CDR2 Rabbit Polyclonal Antibody

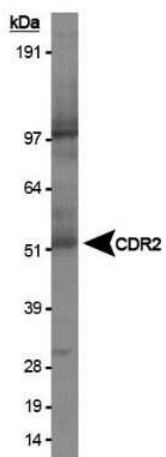
Product data:

Product Type:	Primary Antibodies
Applications:	FC, ICC/IF, IHC, WB
Recommended Dilution:	Flow Cytometry, Immunohistochemistry: 5-10 ug/ml, Western Blot: 2 ug/ml, Immunohistochemistry-Paraffin: 5-10 ug/ml, Immunocytochemistry/ Immunofluorescence
Reactivity:	Bovine, Human, Mouse, Primate
Host:	Rabbit
Clonality:	Polyclonal
Immunogen:	A synthetic peptide made to a C-terminal region of the human protein. [Swiss-prot# Q01850]
Formulation:	Tris-citrate/phosphate [pH 7-8] and 0.1% Sodium Azide
Concentration:	lot specific
Purification:	Peptide affinity purified
Conjugation:	Unconjugated
Storage:	Store at -20°C as received.
Stability:	Stable for 12 months from date of receipt.
Gene Name:	cerebellar degeneration related protein 2
Database Link:	NP_001793 Entrez Gene 12585 Mouse Entrez Gene 1039 Human Q01850
Synonyms:	CDR62; Yo

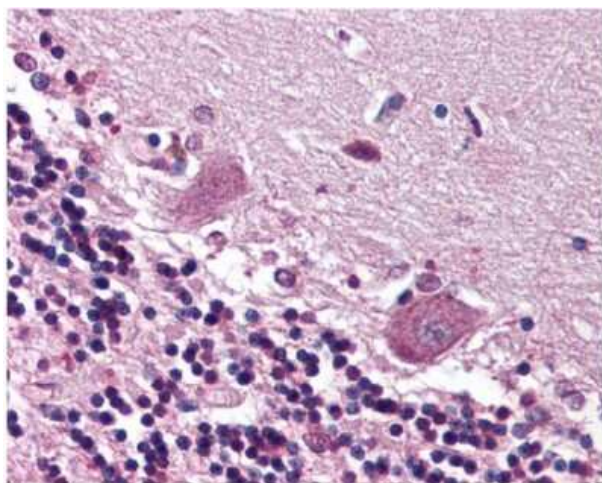


[View online »](#)

Product images:



Western Blot: CDR2 Antibody TA309603 - Analysis of CDR2 antibody on HeLa whole cell.



Immunohistochemistry: CDR2 Antibody TA309603 - Purkinje neurons of the cerebellum.