

Product datasheet for **TA309595**

SynCAM (CADM1) Rabbit Polyclonal Antibody

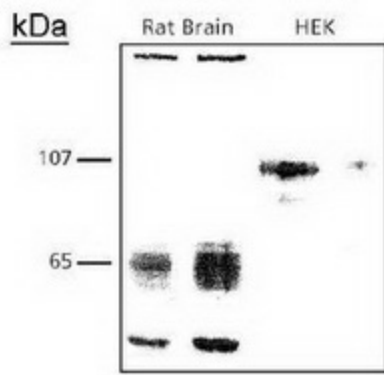
Product data:

| | |
|-----------------------|---|
| Product Type: | Primary Antibodies |
| Applications: | WB |
| Recommended Dilution: | WB |
| Reactivity: | Human, Rat |
| Host: | Rabbit |
| Clonality: | Polyclonal |
| Immunogen: | A synthetic peptide corresponding to the C-terminal region of the rat protein. |
| Formulation: | 0.02% Sodium Azide |
| Purification: | Whole antisera |
| Conjugation: | Unconjugated |
| Storage: | Store at -20°C as received. |
| Stability: | Stable for 12 months from date of receipt. |
| Gene Name: | cell adhesion molecule 1 |
| Database Link: | NP_055148 Entrez Gene 363058 Rat Entrez Gene 23705 Human Q9BY67 |
| Synonyms: | BL2; IGSF4; IGSF4A; Necl-2; NECL2; RA175; sgIGSF; ST17; sTSLC-1; SYNCAM; synCAM1; TSLC1 |
| Protein Families: | Transmembrane |
| Protein Pathways: | Cell adhesion molecules (CAMs) |

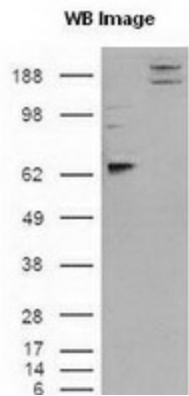


[View online »](#)

Product images:



Western Blot: synCAM Antibody - WB in rat brain and HEK cell lysates showing different glycosylation patterns. Brain fractions give banding patterns of a core glycosylation population around 50kDa and a slightly higher glycosylated population around 65 kDa. The heterologous HEK cell lysates give a single, fully glycosylated, band around 107kDa.



Western Blot: SynCAM Antibody - cells were transfected with the pCMV6-ENTRY control or pCMV6-ENTRY CADM1 cDNA for 48 hrs and lysed. Equivalent amounts of cell lysates (5 ug per lane) were separated by SDS-PAGE and immunoblotted with anti-CADM1.