

Product datasheet for **TA309592**

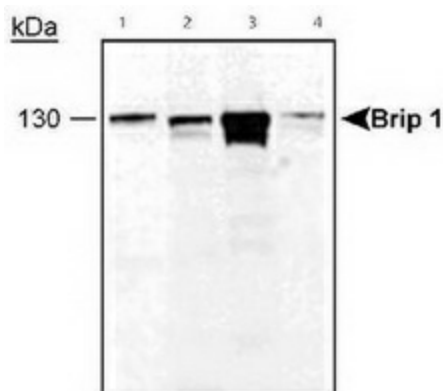
BRIP1 Rabbit Polyclonal Antibody

Product data:

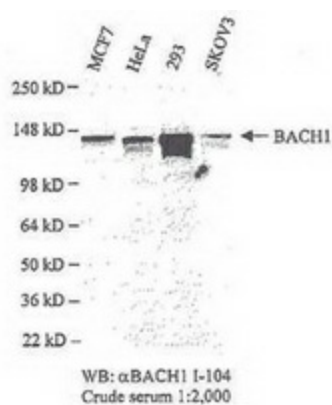
Product Type:	Primary Antibodies
Applications:	WB
Recommended Dilution:	WB, IHC
Reactivity:	Human
Host:	Rabbit
Clonality:	Polyclonal
Immunogen:	A synthetic peptide within the extreme C-terminus of the human FANCI/BACH1/Brip1 protein sequence.
Conjugation:	Unconjugated
Storage:	Store at -20°C as received.
Stability:	Stable for 12 months from date of receipt.
Gene Name:	BRCA1 interacting protein C-terminal helicase 1
Database Link:	NP_114432 Entrez Gene 83990 Human Q9BX63
Synonyms:	BACH1; FANCI; OF
Protein Families:	Druggable Genome



[View online »](#)

Product images:


Brip 1 detected in cell lysates using anti-BRIP1.
Lane 1: MCF-7 lysate, Lane 2: HeLa lysate, Lane 3: 293 lysate and Lane 4: SKOV3 lysate.



Western Blot: FANCJ Antibody - Western blot analysis on MCF7, HeLa, 293T and SKOV3 crude cell lysates using anti-FANCJ.