

Product datasheet for **TA309591**

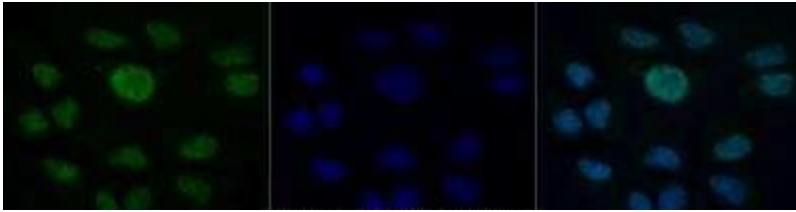
BRCA1 Mouse Monoclonal Antibody [Clone ID: KEN]

Product data:

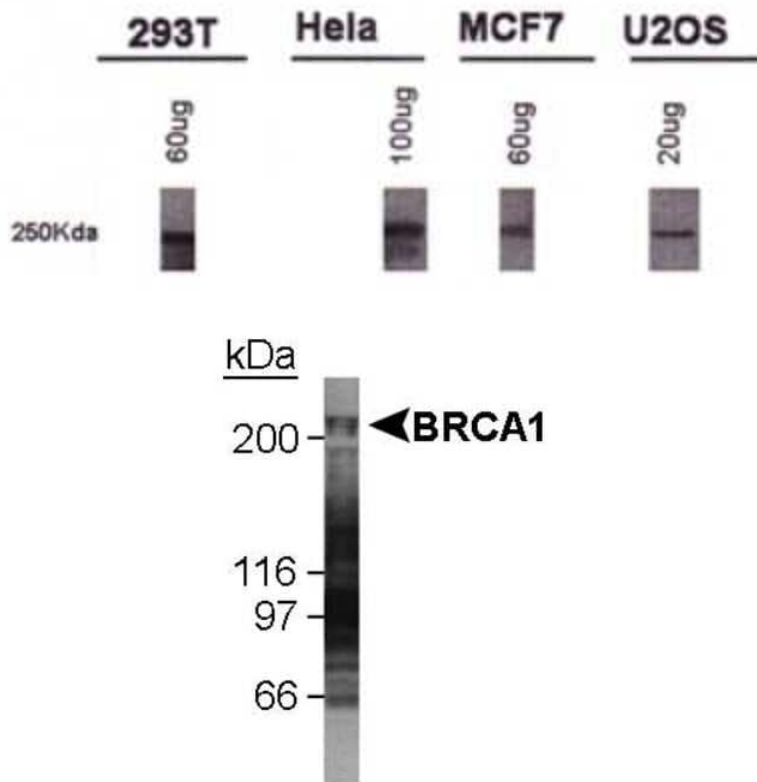
Product Type:	Primary Antibodies
Clone Name:	KEN
Applications:	ICC/IF, IP, WB
Recommended Dilution:	Immunocytochemistry/ Immunofluorescence: 1:100, Immunoprecipitation: 1:10-1:500, Western Blot: 2-4 ug/ml
Reactivity:	Human
Host:	Mouse
Isotype:	IgG3, kappa
Clonality:	Monoclonal
Immunogen:	Human BRCA1 (residues 1314-1864).
Formulation:	Tris-glycine, 150mM NaCl pH 7.5 and 0.05% Sodium Azide
Concentration:	lot specific
Purification:	Protein A purified
Conjugation:	Unconjugated
Storage:	Store at -20°C as received.
Stability:	Stable for 12 months from date of receipt.
Gene Name:	BRCA1, DNA repair associated
Database Link:	NP_009225 Entrez Gene 672 Human P38398
Synonyms:	BRCAI; BRCC1; BROVCA1; FANCS; IRIS; PNCA4; PPP1R53; PSCP; RNF53
Protein Families:	Druggable Genome, Transcription Factors
Protein Pathways:	Ubiquitin mediated proteolysis



[View online »](#)

Product images:


Immunocytochemistry/Immunofluorescence: BRCA1 Antibody (KEN) TA309591 - HeLa cells were fixed for 10 minutes using 10% formalin and then permeabilized for 5 minutes using 1X PBS + 0.5% Triton-X100. The cells were incubated with anti-BRCA1 (KEN) at 5 ug/ml overnight at 4C and detected with an anti-mouse Dylight 488 (Green) at a 1:500 dilution. Nuclei were counterstained with DAPI (Blue). Cells were imaged using a 40X objective.



Western Blot: BRCA1 Antibody (KEN) TA309591 - Detection of BRCA1.

Western Blot: BRCA1 Antibody (KEN) TA309591 - Detection of BRCA1 in U2OS whole cell lysate using NB 100-599. 1 minute ECL detection.