

Product datasheet for **TA309590**

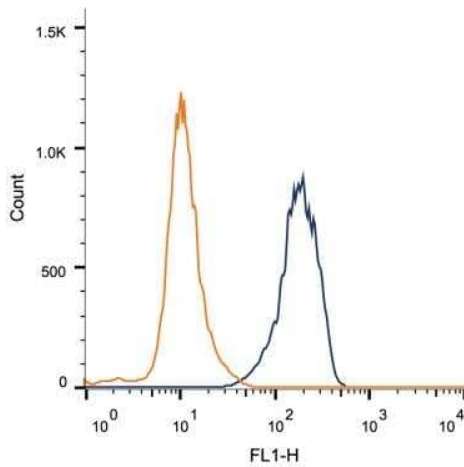
BRCA1 Mouse Monoclonal Antibody [Clone ID: MU]

Product data:

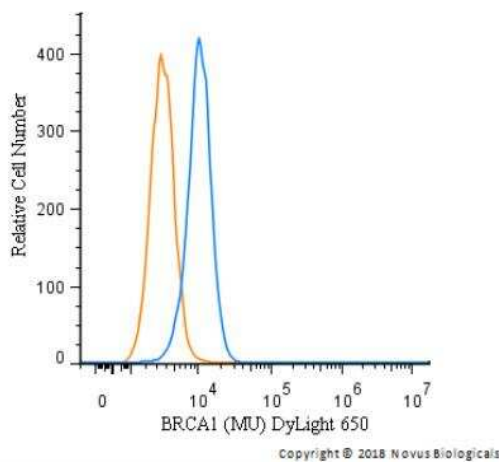
Product Type:	Primary Antibodies
Clone Name:	MU
Applications:	FC, IP, WB
Recommended Dilution:	Western Blot: 2 - 4 ug/mL, Immunoprecipitation: 1:10 - 1:500, Flow Cytometry: 1 ug per million cells
Reactivity:	Human
Host:	Mouse
Isotype:	IgG2b, kappa
Clonality:	Monoclonal
Immunogen:	Human BRCA1 (residues 1314-1864).
Formulation:	Tris-glycine, 150mM NaCl pH 7.5 and 0.05% Sodium Azide
Concentration:	lot specific
Purification:	Protein G purified
Conjugation:	Unconjugated
Storage:	Store at -20°C as received.
Stability:	Stable for 12 months from date of receipt.
Gene Name:	BRCA1, DNA repair associated
Database Link:	NP_009225 Entrez Gene 672 Human P38398
Synonyms:	BRCA1; BRCC1; BROVCA1; FANCS; IRIS; PNCA4; PPP1R53; PSCP; RNF53
Protein Families:	Druggable Genome, Transcription Factors
Protein Pathways:	Ubiquitin mediated proteolysis



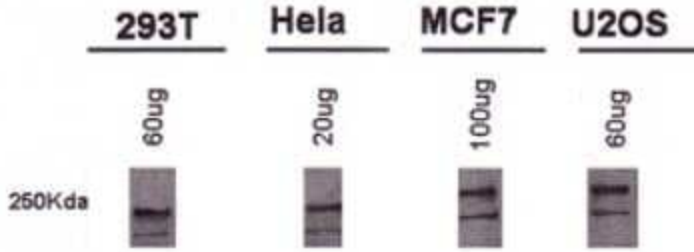
[View online »](#)

Product images:


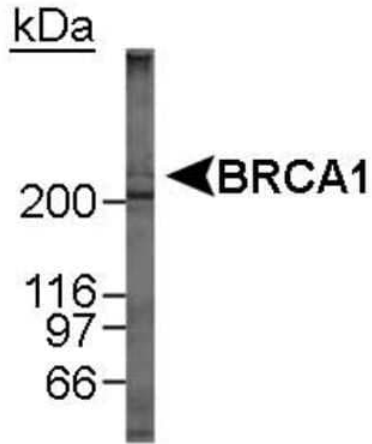
Flow Cytometry: BRCA1 Antibody (MU) TA309590 - Intracellular flow cytometric staining of 1×10^6 MCF-7 cells using BRCA1 antibody (dark blue). Isotype control shown in orange. Antibody at $1 \mu\text{g}/1 \times 10^6$ cells was used.



Flow Cytometry: BRCA1 Antibody (MU) TA309590 - An intracellular stain was performed on MCF7 cells with BRCA1 Antibody [MU] [TA309590C] (blue) and a matched isotype control (orange). Cells were fixed with 4% PFA and then permeabilized with 0.1% saponin. Cells were incubated in an antibody dilution of $2.5 \mu\text{g}/\text{mL}$ for 30 minutes at room temperature. Both antibodies were conjugated to DyLight 650.



Western Blot: BRCA1 Antibody (MU) TA309590 - Detection of BRCA1 using TA309590.



Western Blot: BRCA1 Antibody (MU) TA309590 - Detection of BRCA1 in MCF-7 whole cell lysate using TA309590. 2 minute ECL exposure.