

Product datasheet for **TA309589**

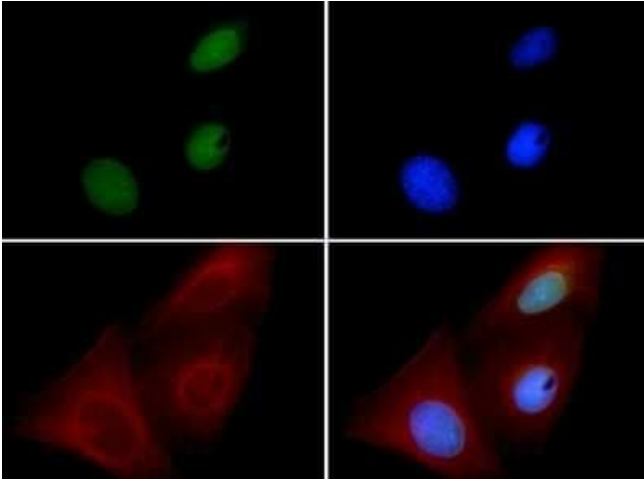
BMI1 Mouse Monoclonal Antibody [Clone ID: LLBmi1-1]

Product data:

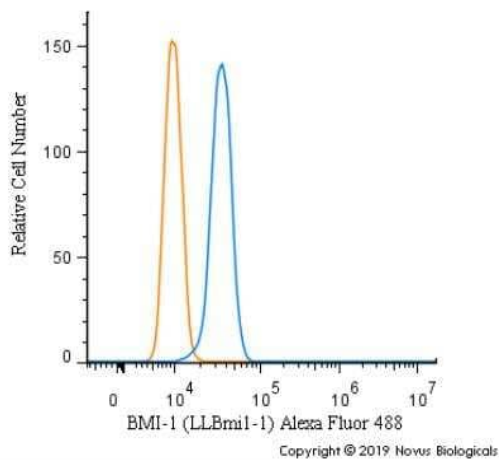
Product Type:	Primary Antibodies
Clone Name:	LLBmi1-1
Applications:	ChIP, FC, ICC/IF, IP, WB
Recommended Dilution:	Immunocytochemistry/ Immunofluorescence: 1:100, Western Blot: 1:1000, Immunoprecipitation: 1:10-1:500, Chromatin Immunoprecipitation (ChIP): 1:10-1:500, Flow Cytometry, Flow (Intracellular)
Reactivity:	Human, Mouse
Host:	Mouse
Isotype:	IgG2b, kappa
Clonality:	Monoclonal
Immunogen:	Human Bmi1 protein [Swiss-Prot# P35226]
Formulation:	Tris-glycine, 150mM NaCl and 0.05% Sodium Azide
Concentration:	lot specific
Purification:	Protein G purified
Conjugation:	Unconjugated
Storage:	Store at -20°C as received.
Stability:	Stable for 12 months from date of receipt.
Gene Name:	BMI1 proto-oncogene, polycomb ring finger
Database Link:	NP_005171 Entrez Gene 12151 Mouse Entrez Gene 648 Human P35226
Synonyms:	BMI1; FLVI2; PCGF4; RNF51
Protein Families:	Druggable Genome, ES Cell Differentiation/IPS, Transcription Factors



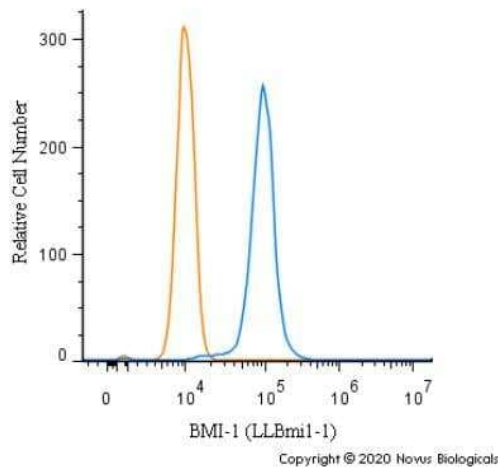
[View online »](#)

Product images:

Immunocytochemistry/Immunofluorescence: BMI-1 Antibody (LLBmi1-1) TA309589 - Bmi1 antibody was tested in U2OS cells with FITC (green). Nuclei and alpha-tubulin were counterstained with Dapi (blue) and Dylight 550 (red).



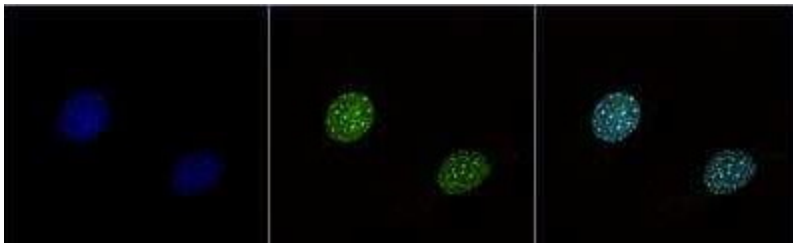
Flow Cytometry: BMI-1 Antibody (LLBmi1-1) TA309589 - An intracellular stain was performed on U2OS cells with BMI-1 Antibody [LLBmi1-1] TA309589AF488 (blue) and a matched isotype control (orange). Cells were fixed with 4% PFA and then permeabilized with 0.1% saponin. Cells were incubated in an antibody dilution of 5 ug/mL for 30 minutes at room temperature. Both antibodies were conjugated to Alexa Fluor 488.



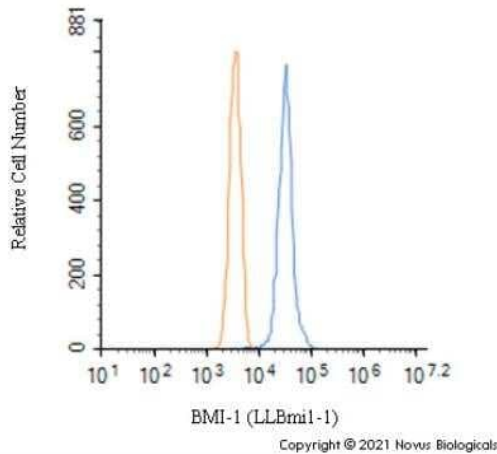
Flow Cytometry: BMI-1 Antibody (LLBmi1-1) TA309589 - An intracellular stain was performed on U2OS cells with BMI-1 [LLBmi1-1] Antibody TA309589 (blue) and a matched isotype control (orange). Cells were fixed with 4% PFA and then permeabilized with 0.1% saponin. Cells were incubated in an antibody dilution of 1.0 ug/mL for 30 minutes at room temperature, followed by Mouse IgG (H+L) Cross-Adsorbed Secondary Antibody, Dylight 550 (84540, Thermo Fisher).



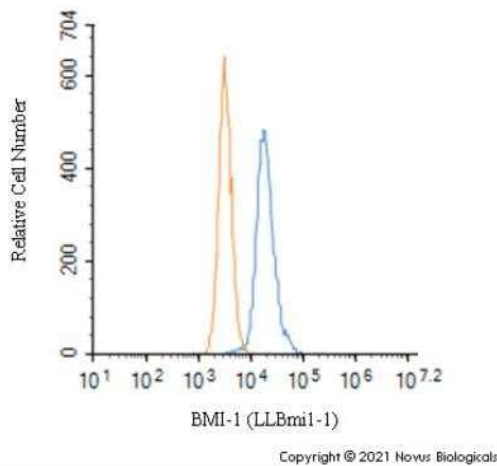
Immunocytochemistry/Immunofluorescence: BMI-1 Antibody (LLBmi1-1) TA309589 - HeLa cells were fixed in 4% paraformaldehyde for 10 minutes and permeabilized in 0.5% Triton X-100 in PBS for 5 minutes. The cells were incubated with anti- TA309589 at 2 ug/ml overnight at 4C and detected with an anti-mouse Dylight 488 (Green) at a 1:1000 dilution for 60 minutes. Nuclei were counterstained with DAPI (Blue). Cells were imaged using a 100X objective and digitally deconvolved.



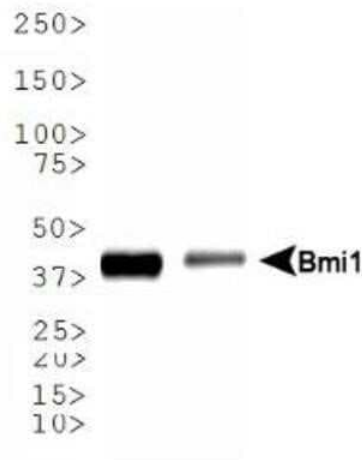
Immunocytochemistry/Immunofluorescence: BMI-1 Antibody (LLBmi1-1) TA309589 - NIH3T3 cells were fixed in 4% paraformaldehyde for 10 minutes and permeabilized in 0.5% Triton X-100 in PBS for 5 minutes. The cells were incubated with anti- TA309589 at 2 ug/ml overnight at 4C and detected with an anti-mouse Dylight 488 (Green) at a 1:1000 dilution for 60 minutes. Nuclei were counterstained with DAPI (Blue). Cells were imaged using a 100X objective and digitally deconvolved.



Flow Cytometry: BMI-1 Antibody (LLBmi1-1) TA309589 - An intracellular stain was performed on U937 cells with BMI-1 Antibody (LLBmi1-1) TA309589 (blue) and a matched mouse IgG2b Kappa isotype control (orange) MAB004. Cells were fixed with 4% PFA and then permeabilized with 0.1% saponin. Cells were incubated in an antibody dilution of 2.5 ug/mL for 30 minutes at room temperature, followed by Mouse IgG (H+L) Cross-Adsorbed Secondary Antibody, Dylight 550 (35503, Thermo Fisher).



Flow Cytometry: BMI-1 Antibody (LLBmi1-1) TA309589 - An intracellular stain was performed on NIH3T3 cells with BMI-1 Antibody (LLBmi1-1) TA309589 (blue) and a matched mouse IgG2b Kappa isotype control (orange) MAB004. Cells were fixed with 4% PFA and then permeabilized with 0.1% saponin. Cells were incubated in an antibody dilution of 2.5 ug/mL for 30 minutes at room temperature, followed by Mouse IgG (H+L) Cross-Adsorbed Secondary Antibody, Dylight 550 (35503, Thermo Fisher).



Western Blot: BMI-1 Antibody (LLBmi1-1) TA309589 - Western blot analysis of Bmi1 expression in 1) U2OS and 2) K562 whole cell lysates using TA309589.