

Product datasheet for **TA309588**

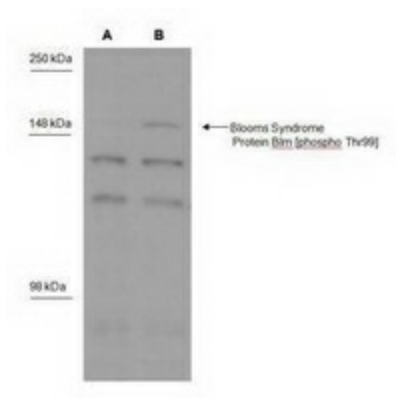
BLM Rabbit Polyclonal Antibody

Product data:

Product Type:	Primary Antibodies
Applications:	WB
Recommended Dilution:	WB
Reactivity:	Human
Host:	Rabbit
Clonality:	Polyclonal
Immunogen:	Synthetic phospho-peptide surrounding the Blooms Syndrome Protein Blm threonine 99 region
Formulation:	0.2M glycine, 1M Tris-HCl, pH 8.5 and 0.1% Sodium Azide
Concentration:	lot specific
Purification:	Affinity purified
Conjugation:	Unconjugated
Storage:	Store at -20°C as received.
Stability:	Stable for 12 months from date of receipt.
Gene Name:	Bloom syndrome RecQ like helicase
Database Link:	NP_000048 Entrez Gene 641 Human P54132
Synonyms:	BS; RECQ2; RECQL2; RECQL3
Protein Families:	Druggable Genome, Stem cell - Pluripotency
Protein Pathways:	Homologous recombination



[View online »](#)

Product images:

Blooms Syndrome Protein BIm [phospho Thr99] Antibody - Western blot analysis of Blooms Syndrome Protein BIm phosphorylated at Thr99 in MDA-MB-231 cells A) not treated and B) treated with 1 μM camptothecin using TA309588. Image courtesy of Dr. Keli Agama.