

Product datasheet for **TA309587**

SHARP2 (BHLHE40) Rabbit Polyclonal Antibody

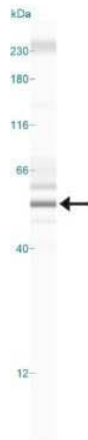
Product data:

Product Type:	Primary Antibodies
Applications:	ChIP, ELISA, FC, ICC/IF, IHC, Immunoblotting, IP, Simple Western, WB
Recommended Dilution:	Western Blot: 1:500-1:1500, Chromatin Immunoprecipitation (ChIP), Immunohistochemistry: 1:200 - 1:500, Simple Western: 1:50, Immunocytochemistry/ Immunofluorescence: 1:500 - 1:1000, Immunohistochemistry-Paraffin: 1:200 - 1:500, Immunoprecipitation, Immunoblotting: 1:500-1:1500, Flow Cytometry: 2-5 ug/ml, Chromatin Immunoprecipitation, Chromatin Immunoprecipitation Sequencing, ELISA
Reactivity:	Human
Host:	Rabbit
Isotype:	IgG
Clonality:	Polyclonal
Immunogen:	This DEC1 antibody maps to a region between residues 350 and the C-terminus (residue 412) of human Differentially Expressed in Chondrocytes NP_003661.1 (GenelD 8553).
Formulation:	Tris-citrate/phosphate buffer, pH 7 to 8 and 0.09% Sodium Azide
Concentration:	lot specific
Purification:	Immunogen affinity purified
Conjugation:	Unconjugated
Storage:	Store at -20°C as received.
Stability:	Stable for 12 months from date of receipt.
Gene Name:	basic helix-loop-helix family member e40
Database Link:	NP_003661 Entrez Gene 8553 Human Q14503
Synonyms:	BHLHB2; DEC1; HLHB2; SHARP-2; STRA13; Stra14
Protein Families:	Transcription Factors
Protein Pathways:	Circadian rhythm - mammal

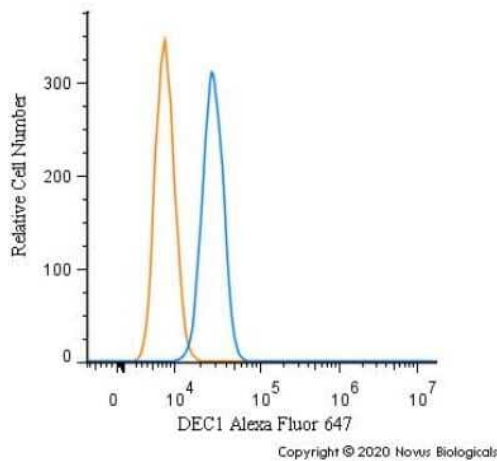


[View online »](#)

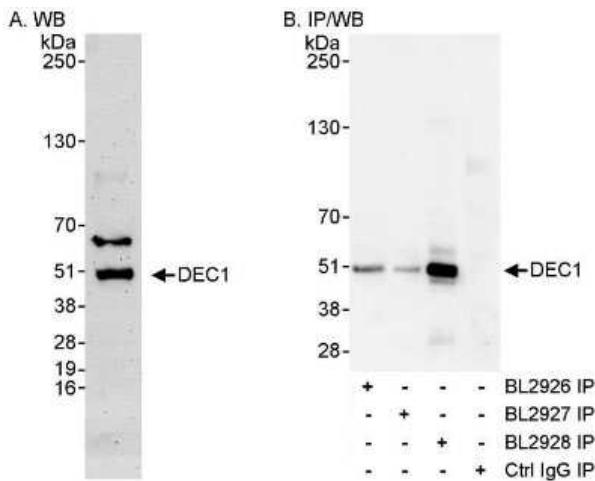
Product images:



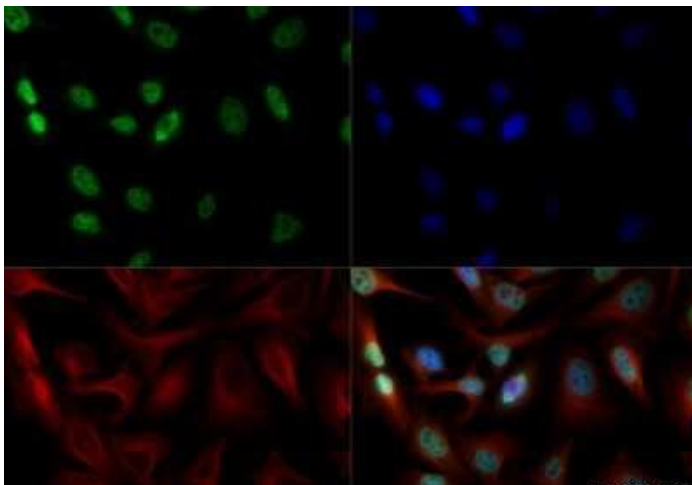
Simple Western: DEC1 Antibody - BSA Free TA309587 - Simple Western lane view shows a specific band for DEC1 in 1.0 mg/ml of HeLa lysate. This experiment was performed under reducing conditions using the 12-230 kDa separation system.



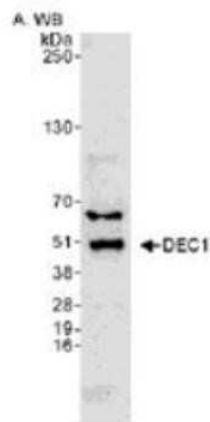
Flow Cytometry: DEC1 Antibody - BSA Free TA309587AF647 - An intracellular stain was performed on A431 cells with DEC1 Antibody TA309587AF647 (blue) and a matched isotype control (orange). Cells were fixed with 4% PFA and then permeabilized with 0.1% saponin. Cells were incubated in an antibody dilution of 2.5 ug/mL for 30 minutes at room temperature. Both antibodies were conjugated to Alexa Fluor 647.



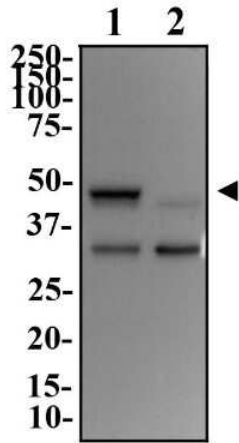
Immunoprecipitation: DEC1 Antibody - BSA Free TA309587 - Samples: Whole cell lysate from HeLa (50 ug for WB) and 293T (1 mg/IP, 20% of IP loaded) cells. Antibodies: Affinity purified rabbit anti-DEC1 antibody BL2928 used for WB at 0.1 ug/ml (A) and 1 ug/ml (B) and for IP at 3 ug/mg lysate. DEC1 was also immunoprecipitated using rabbit anti-DEC1 antibodies BL2926 and BL2927, which recognize upstream epitopes. Detection: Chemiluminescence with exposure times of 3 minutes (A) and 30 seconds (B).



Immunocytochemistry/Immunofluorescence: DEC1 Antibody - BSA Free TA309587 - HeLa cells were fixed for 10 minutes using 10% formalin and then permeabilized for 5 minutes using 1X TBS + 0.5% Triton-X100. The cells were incubated with anti-DEC1 (TA309587) at a 1:200 dilution overnight at 4C and detected with anti-rabbit Dylight 488 (Green) at a 1:500 dilution. Alpha tubulin was used as a co-stain at a 1:1000 dilution and detected with anti-mouse Dylight 550 (Red) at a 1:500 dilution. Nuclei were counterstained with DAPI (Blue). Cells were imaged using a 40X objective.



Western Blot: DEC1 Antibody - BSA Free TA309587 - Western blot analysis of DEC1 in HeLa whole cell lysate.



Western Blot: DEC1 Antibody - BSA Free
TA309587 - Western Blot Image of anti-DEC1.
Whole cell protein from A431 (lane 1) and PC3
(lane 2) was separated on a 12% gel by SDS-PAGE,
transferred to PVDF membrane and blocked in
5% non-fat milk in TBST. The membrane was
probed with 2 ug/ml anti-DEC1 in 1% milk, and
detected with an anti-rabbit HRP secondary
antibody using chemiluminescence.