

Product datasheet for **TA309586**

Bestrophin (BEST1) Mouse Monoclonal Antibody [Clone ID: E6-6]

Product data:

Product Type:	Primary Antibodies
Clone Name:	E6-6
Applications:	ICC/IF, IHC, IP, WB
Recommended Dilution:	Immunocytochemistry/ Immunofluorescence, Immunohistochemistry-Paraffin, Immunohistochemistry, Proximity Ligation Assay, Immunoprecipitation, Knockout Validated, Western Blot: 1:1000, Immunohistochemistry-Frozen, Dual RNAscope ISH-IHC
Reactivity:	Human, Porcine, Primate
Host:	Mouse
Isotype:	IgG1, kappa
Clonality:	Monoclonal
Immunogen:	Synthetic peptide conjugated to KLH [KDHMDPYWALENRDEAHS].
Formulation:	0.1% Sodium Azide
Purification:	Ascites
Conjugation:	Unconjugated
Storage:	Store at -20°C as received.
Stability:	Stable for 12 months from date of receipt.
Predicted Protein Size:	68 kDa
Gene Name:	bestrophin 1
Database Link:	NP_004174 Entrez Gene 7439 Human O76090
Background:	Best macular dystrophy (BMD) or vitelliform macular dystrophy (VMD2), is an autosomal form of macular degeneration, characterized by a depressed light peak in the electrooculogram (EOG). It is inherited and has an early onset. Bestrophin is a 68 kDa basolateral plasma membrane protein encoded by the VMD2 gene. Bestrophin's function is still unknown, but data suggests that it is a chloride channel that plays a role in generating the altered EOG in Best disease patients. In addition, Bestrophin is a useful biochemical and histological marker of RPE (retinal pigment epithelial cells) cells.

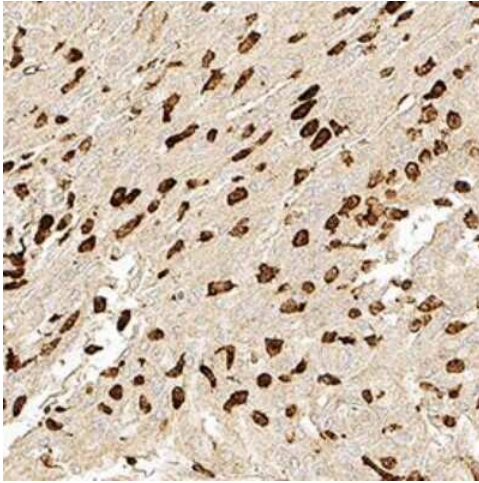


[View online »](#)

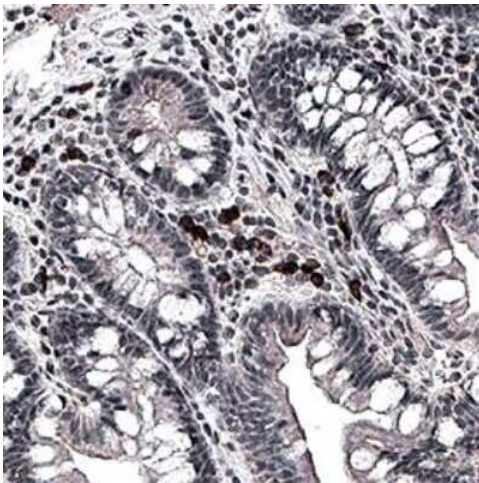
Synonyms: ARB; BEST; BMD; RP50; TU15B; VMD2

Protein Families: Druggable Genome, Ion Channels: Other, Transmembrane

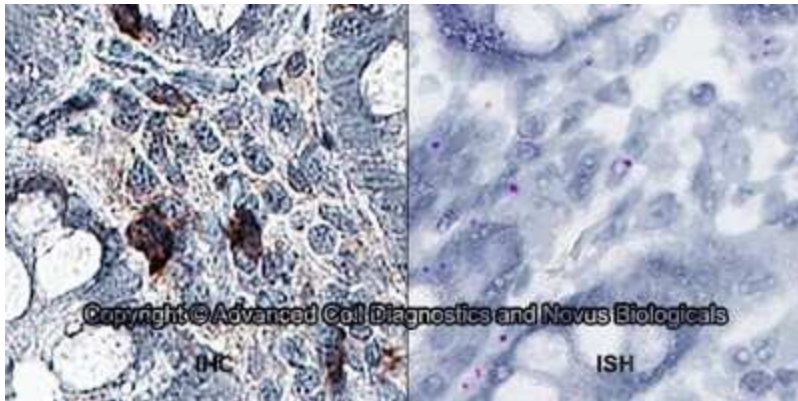
Product images:



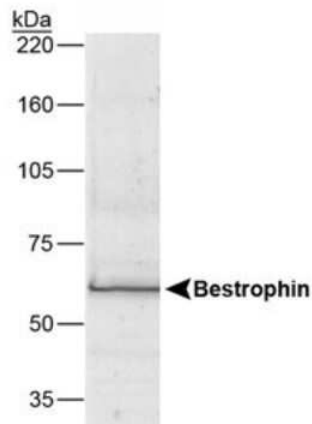
Immunohistochemistry-Paraffin: Bestrophin 1 Antibody (E6-6) - BSA Free TA309586 - Bestrophin 1 was detected in immersion fixed paraffin-embedded sections of human brain using Mouse Anti-Human Bestrophin 1 (E6-6) Monoclonal Antibody (Catalog # TA309586) at 1:300 for 1 hour at room temperature followed by incubation with the Anti-Mouse IgG VisUCyte™ HRP Polymer Antibody (Catalog # VC001). Tissue was stained using DAB (brown) and counterstained with hematoxylin (blue). Specific staining was localized to the cytoplasm in neurons.



Immunohistochemistry-Paraffin: Bestrophin 1 Antibody (E6-6) - BSA Free TA309586 - Bestrophin 1 was detected in immersion fixed paraffin sections of human small intestine using t Mouse Anti-Human Bestrophin 1 Monoclonal Antibody (Catalog # TA309586) at 5 ug/mL for 1 hour at room temperature followed by incubation with the Anti-Mouse IgG VisUCyte™ HRP Polymer Antibody (Catalog # VC001). Tissue was stained using DAB (brown) and counterstained with hematoxylin (blue). Specific staining was localized to the cell surface and extracellular.



Dual RNAscope ISH-IHC: Bestrophin 1 Antibody (E6-6) - BSA Free TA309586 - Formalin-fixed paraffin-embedded tissue sections of human duodenum were probed for Bestrophin 1 mRNA (ACD RNAscope Probe, catalog # 433181; Fast Red chromogen, ACD catalog # 322360). Adjacent tissue section was processed for immunohistochemistry using mouse anti-human (Novus Biologicals catalog # TA309586) at 0.3ug/mL with overnight incubation at 4 degrees Celsius followed by incubation with anti-mouse IgG VisUcyte HRP Polymer Antibody (Catalog # VC001) and DAB chromogen (yellow-brown). Tissue was counterstained with hematoxylin (blue). IHC signal is confined to cytoplasm.



Western Blot: Bestrophin 1 Antibody (E6-6) - BSA Free TA309586 - Detection of Bestrophin (68 kDa) from human RPE cell lysate.