

Product datasheet for **TA309581**

beta 1 Sodium Potassium ATPase (ATP1B1) Mouse Monoclonal Antibody [Clone ID: 464.8 (also known as 8A)]

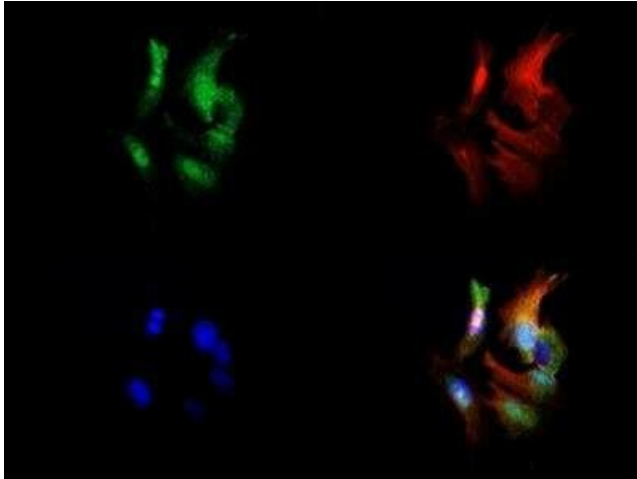
Product data:

Product Type:	Primary Antibodies
Clone Name:	464.8 (also known as 8A)
Applications:	ICC/IF, IHC, WB
Recommended Dilution:	Immunohistochemistry, Immunohistochemistry-Paraffin, Immunocytochemistry/ Immunofluorescence: 1:500-1:1000, Western Blot: 1:1000-1:5000
Reactivity:	Bovine, Canine, Human, Porcine, Rabbit, Rat
Host:	Mouse
Isotype:	IgG2a, kappa
Clonality:	Monoclonal
Immunogen:	Purified Na,K-ATPase from rabbit renal outer medulla.
Formulation:	0.02% Sodium Azide
Concentration:	lot specific
Purification:	Ascites
Conjugation:	Unconjugated
Storage:	Store at -20°C as received.
Stability:	Stable for 12 months from date of receipt.
Gene Name:	ATPase Na ⁺ /K ⁺ transporting subunit beta 1
Database Link:	NP_001668 Entrez Gene 25650 Rat Entrez Gene 481 Human P05026
Synonyms:	ATP1B
Protein Families:	Transmembrane
Protein Pathways:	Cardiac muscle contraction

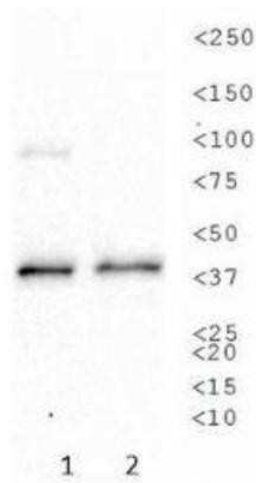


[View online »](#)

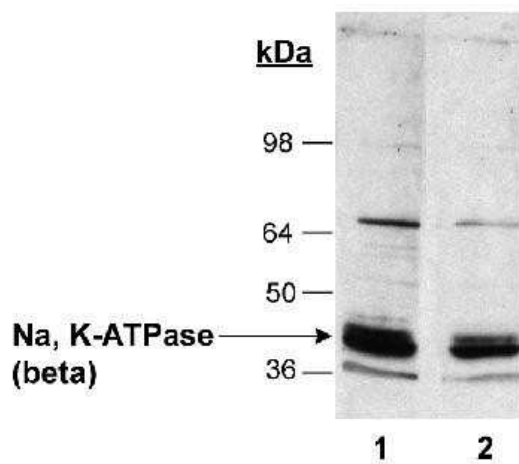
Product images:



Immunocytochemistry/Immunofluorescence: Sodium Potassium ATPase Beta 1 Antibody (464.8 (also known as 8A)) TA309581 - Sodium Potassium ATPase Beta 1 antibody was tested in HepG2 cells with Dylight 488 (green). Nuclei and alpha-tubulin were counterstained with DAPI (blue) and Dylight 550 (red).



Western Blot: Sodium Potassium ATPase Beta 1 Antibody (464.8 (also known as 8A)) TA309581 - Western blot analysis of Sodium Potassium ATPase Beta 1 expression in 1) SK-BR-3 and 2) A-431 whole cell lysates using TA309581.



Western Blot: Sodium Potassium ATPase Beta 1 Antibody (464.8 (also known as 8A)) TA309581 - Detection of Na, K-ATPase (beta) in rat kidney homogenates (20 ug) using NB 300-147. Lane 1: 1:2,500 primary. Lane 2: 1:5,000 primary.