

Product datasheet for TA309580

Sodium Potassium ATPase (ATP1A1) Mouse Monoclonal Antibody

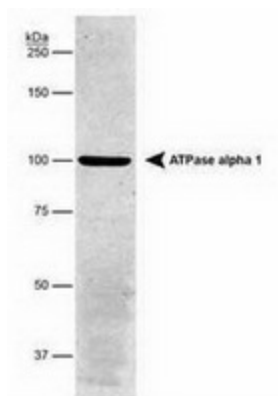
Product data:

Product Type:	Primary Antibodies
Applications:	FC, IF, IHC, WB
Recommended Dilution:	Western Blot 1:1000-1:10000; Flow Cytometry 1:50-1:200; Immunocytochemistry/Immunofluorescence 1:50-1:1000; Immunohistochemistry 1:200; Immunohistochemistry-Paraffin 1:200
Reactivity:	Canine, Human, Mouse, Porcine, Primate, Rabbit, Rat, Sheep, Xenopus
Host:	Mouse
Isotype:	IgG1, kappa
Clonality:	Monoclonal
Immunogen:	Purified Na ⁺ ,K ⁺ -ATPase from rabbit renal outer medulla
Formulation:	Ascitic fluid and 0.1% Sodium Azide
Purification:	Ascites
Storage:	Store at -20°C as received.
Stability:	Stable for 12 months from date of receipt.
Gene Name:	ATPase Na ⁺ /K ⁺ transporting subunit alpha 1
Database Link:	NP_000692 Entrez Gene 11928 Mouse Entrez Gene 24211 Rat Entrez Gene 476 Human
Synonyms:	MGC3285; MGC51750
Protein Families:	Druggable Genome, Transmembrane
Protein Pathways:	Cardiac muscle contraction

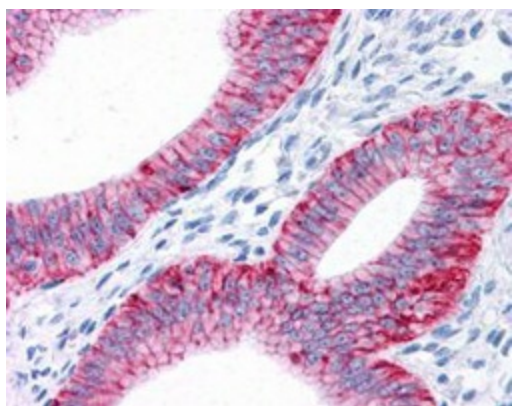


[View online »](#)

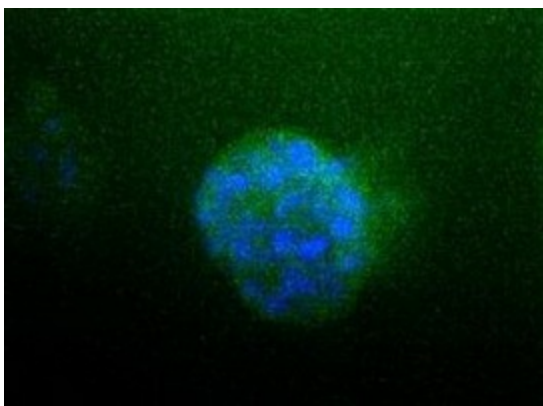
Product images:



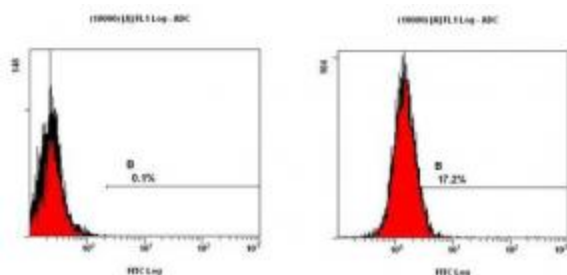
Western Blot: Alpha 1 Sodium Potassium ATPase Antibody (464.6) - Western Blot analysis detecting Na, K-ATPase (alpha) in porcine proximal tubule protein, using anti-ATP1A1.



Immunohistochemistry: Sodium Potassium Alpha 1 antibody - Staining of endometrial glands within the uterus using anti-ATP1A1. Note the absence of staining in the surrounding myometrial smooth muscle.



Immunofluorescence: Sodium Potassium ATPase Alpha 1 Antibody (464.6) - Plasma Membrane Marker - Detection of ATPA1 (Green) in HepG2 cells. Nuclei (Blue) were counterstained using Hoechst 33258.



Flow Cytometry / FACS analysis: Sodium Potassium ATPase Alpha 1 Antibody (464.6) - Plasma Membrane Marker - Detection of Sodium Potassium ATPase Alpha 1 in fixed HeLa cells using anti-ATP1A1.