

Product datasheet for **TA309579**

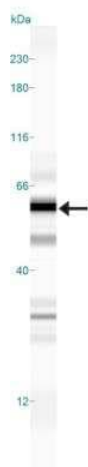
ATP13A2 Rabbit Polyclonal Antibody

Product data:

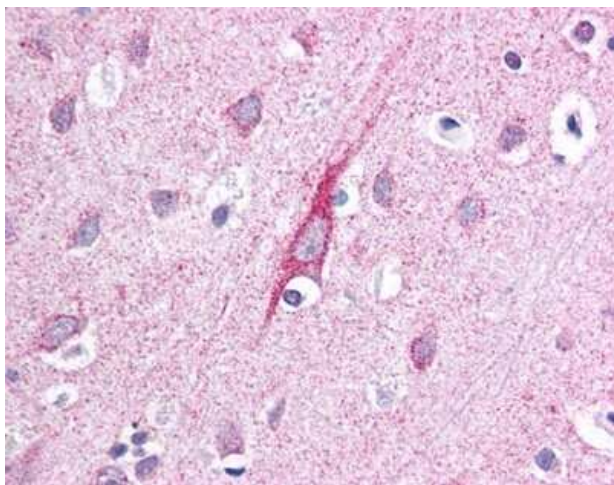
Product Type:	Primary Antibodies
Applications:	IHC, Simple Western, WB
Recommended Dilution:	Immunohistochemistry: 10 ug/ml, Western Blot: 2ug/ ml, Simple Western: 1:100
Reactivity:	Human, Mouse
Host:	Rabbit
Clonality:	Polyclonal
Immunogen:	A synthetic peptide within the internal region of residues 200-300 of the human ATP13A2 protein. [Swiss-Prot# Q9NQ11]
Formulation:	Tris-glycine, 150mM NaCl and 0.05% Sodium Azide
Concentration:	lot specific
Purification:	Peptide affinity purified
Conjugation:	Unconjugated
Storage:	Store at -20°C as received.
Stability:	Stable for 12 months from date of receipt.
Gene Name:	ATPase 13A2
Database Link:	NP_001135445 Entrez Gene 74772 Mouse Entrez Gene 23400 Human Q9NQ11
Synonyms:	CLN12; HSA9947; KRPPD; PARK9
Protein Families:	Transmembrane



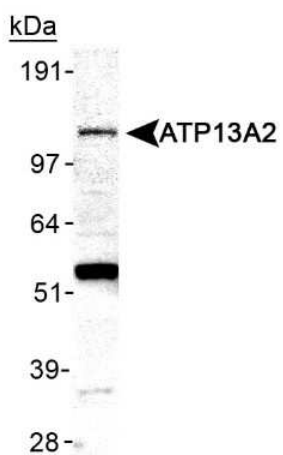
[View online »](#)

Product images:

Simple Western: ATP13A2 Antibody TA309579 - Simple Western lane view shows a specific band for ATP13A2 in 0.5 mg/ml of Human Brain lysate. This experiment was performed under reducing conditions using the 12-230 kDa separation system.



Immunohistochemistry: ATP13A2 Antibody TA309579 - Staining of neurons and neuropils using a concentration of 10ug/ml. Human brain, 40X.



Western Blot: ATP13A2 Antibody TA309579 -
Detection of ATP13A2 in mouse brain membrane
lysate.