

Product datasheet for **TA309577**

ATM Mouse Monoclonal Antibody [Clone ID: 10H11.E12]

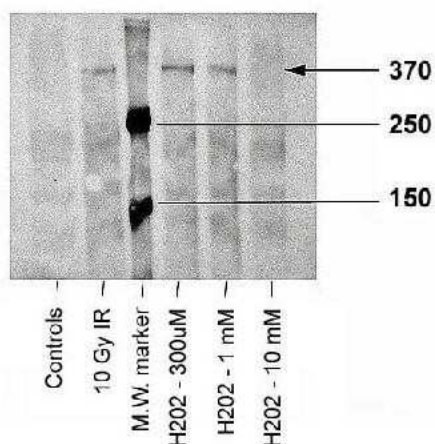
Product data:

Product Type:	Primary Antibodies
Clone Name:	10H11.E12
Applications:	ICC/IF, IHC, IP, WB
Recommended Dilution:	Immunohistochemistry: 1:200, Immunocytochemistry/ Immunofluorescence: 1:1000, Immunoprecipitation: 1:10-1:500, Western Blot: 1:1000, Immunohistochemistry-Paraffin: 1:200
Reactivity:	Human, Mouse, Rat
Host:	Mouse
Isotype:	IgG1, kappa
Clonality:	Monoclonal
Immunogen:	A synthetic peptide with a phosphorylated serine (1981).
Formulation:	Tris-glycine, 150mM NaCl and 0.05% Sodium Azide
Concentration:	lot specific
Purification:	Protein G purified
Conjugation:	Unconjugated
Storage:	Store at -20°C as received.
Stability:	Stable for 12 months from date of receipt.
Gene Name:	ATM serine/threonine kinase
Database Link:	NP_612149 Entrez Gene 11920 Mouse Entrez Gene 300711 Rat Entrez Gene 472 Human Q13315
Synonyms:	AT1; ATA; ATC; ATD; ATDC; ATE; DKFZp781A0353; MGC74674; TEL1; TELO1
Protein Families:	Druggable Genome, Protein Kinase, Transcription Factors
Protein Pathways:	Apoptosis, Cell cycle, p53 signaling pathway

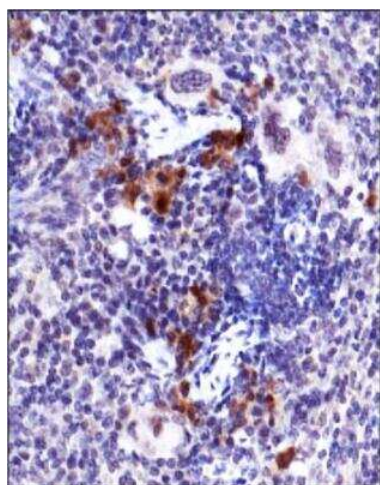


[View online »](#)

Product images:



Western Blot: ATM [p Ser1981] Antibody (10H11.E12) TA309577 - Analysis of ATM-kinase, using ATM [p Ser1981] antibody (10H11.E12) TA309577. Sample: Irradiated or peroxidated human fibroblasts. Observed molecular weight 370 kDa. Theoretical molecular weight 351 kDa.



Immunohistochemistry: ATM [p Ser1981] Antibody (10H11.E12) TA309577 - ATM [p Ser1981] antibody (10H11.E12) TA309577 was tested in mouse spleen using DAB with hematoxylin counterstain.