

Product datasheet for **TA309573**

Apolipoprotein E (APOE) Mouse Monoclonal Antibody

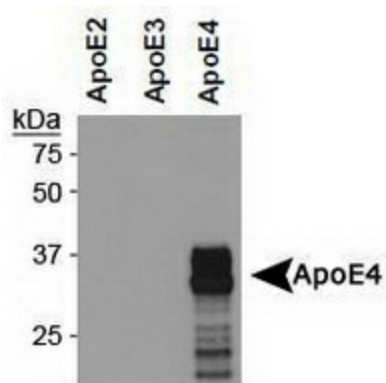
Product data:

Product Type:	Primary Antibodies
Applications:	WB
Recommended Dilution:	WB, IP, ELISA
Reactivity:	Human
Host:	Mouse
Isotype:	IgG1, kappa
Clonality:	Monoclonal
Immunogen:	Synthetic peptide made to an internal region of human ApoE4 (within residues 100-150).
Formulation:	Tris-glycine, 150mM NaCl pH 7.5 and 0.05% Sodium Azide
Concentration:	lot specific
Purification:	Protein G purified
Conjugation:	Unconjugated
Storage:	Store at -20°C as received.
Stability:	Stable for 12 months from date of receipt.
Gene Name:	apolipoprotein E
Database Link:	NP_000032 Entrez Gene 348 Human P02649
Synonyms:	AD2; APO-E; LDLCQ5; LPG
Protein Families:	Adult stem cells, Druggable Genome, Secreted Protein, Stem cell - Pluripotency
Protein Pathways:	Alzheimer's disease



[View online »](#)

Product images:



Western Blot: ApoE4 Antibody (4E4) - Western blot analysis of ApoE4 expression in concentrated supernatants of CHO cells secreting human ApoE2, ApoE3 or ApoE4 using anti-ApoE4. Image courtesy of Dr. Marko Roblek from the Medical University of Vienna.