

Product datasheet for **TA309572**

APCDD1 Rabbit Polyclonal Antibody

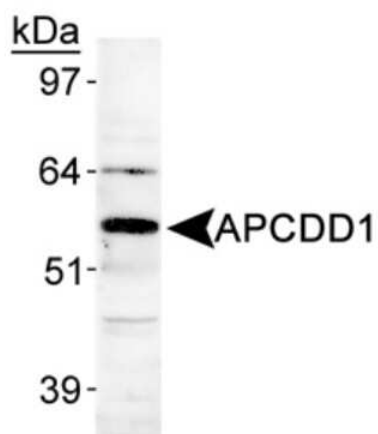
Product data:

Product Type:	Primary Antibodies
Applications:	WB
Recommended Dilution:	Knockdown Validated, Western Blot: 0.5 ug/ml
Reactivity:	Chicken, Human, Mouse
Host:	Rabbit
Clonality:	Polyclonal
Immunogen:	Synthetic peptide made to an internal portion of the human protein (within residues 400-500). [Swiss-Prot# Q8J025]
Formulation:	PBS, 30% Glycerol and 0.1% Sodium Azide
Concentration:	lot specific
Purification:	Peptide affinity purified
Conjugation:	Unconjugated
Storage:	Store at -20°C as received.
Stability:	Stable for 12 months from date of receipt.
Gene Name:	adenomatosis polyposis coli down-regulated 1
Database Link:	NP_694545 Entrez Gene 494504 Mouse Entrez Gene 147495 Human Q8J025
Synonyms:	B7323; DRAPC1; FP7019; HHS; HTS; HYPT1
Protein Families:	Transmembrane



[View online »](#)

Product images:



Western Blot: APCDD1 Antibody TA309572 -
Detection of APCDD1 in human heart lysate