

Product datasheet for **TA309568**

GPAT4 Rabbit Polyclonal Antibody

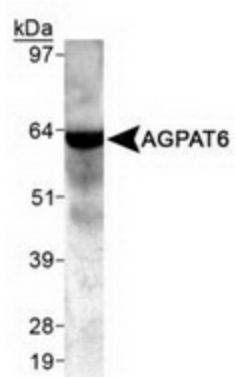
Product data:

Product Type:	Primary Antibodies
Applications:	WB
Recommended Dilution:	WB
Reactivity:	Bovine, Human, Mouse, Porcine, Primate, Rat
Host:	Rabbit
Clonality:	Polyclonal
Immunogen:	A synthetic peptide made to a C-terminal portion of the human AGPAT6 protein sequence (between residues 400-456). [Swiss-Prot Q86UL3]
Formulation:	Tris-glycine, 150mM NaCl and 0.05% Sodium Azide
Purification:	Peptide affinity purified
Conjugation:	Unconjugated
Storage:	Store at -20°C as received.
Stability:	Stable for 12 months from date of receipt.
Gene Name:	glycerol-3-phosphate acyltransferase 4
Database Link:	NP_848934 Entrez Gene 102247 Mouse Entrez Gene 290843 Rat Entrez Gene 137964 Human Q86UL3
Synonyms:	1-AGPAT 6; AGPAT6; LPAAT-zeta; LPAATZ; TSARG7
Protein Families:	Transmembrane
Protein Pathways:	Ether lipid metabolism, Glycerolipid metabolism, Glycerophospholipid metabolism, Metabolic pathways



[View online »](#)

Product images:



Detection of AGPAT6 in mouse skeletal muscle using anti-AGPAT6.