

Product datasheet for **TA309565**

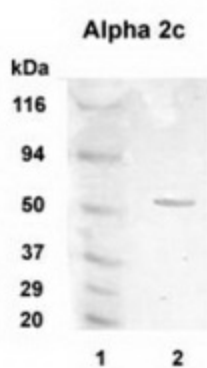
alpha 2C Adrenergic Receptor (ADRA2C) Rabbit Polyclonal Antibody

Product data:

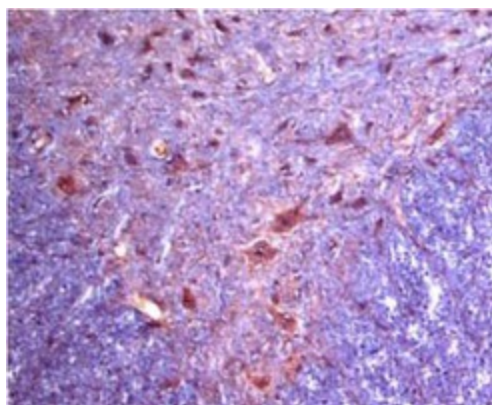
Product Type:	Primary Antibodies
Applications:	IHC, WB
Recommended Dilution:	WB, IHC
Reactivity:	Human, Mouse, Rat
Host:	Rabbit
Clonality:	Polyclonal
Immunogen:	Synthetic peptide comprising residues 309-324 [GAEGGAGGADGQGAGP] of the human Alpha 2c protein.
Formulation:	PBS and 0.02% Sodium Azide
Concentration:	lot specific
Purification:	Affinity purified
Conjugation:	Unconjugated
Storage:	Store at -20°C as received.
Stability:	Stable for 12 months from date of receipt.
Gene Name:	adrenoceptor alpha 2C
Database Link:	NP_000674 Entrez Gene 11553 MouseEntrez Gene 24175 RatEntrez Gene 152 Human P18825
Synonyms:	ADRA2L2; ADRA2RL2; ADRARL2; ALPHA2CAR
Protein Families:	Druggable Genome, GPCR, Transmembrane
Protein Pathways:	Neuroactive ligand-receptor interaction



[View online »](#)

Product images:

Western Blot: Alpha-2C Adrenergic Receptor Antibody - Western blot detection of Alpha 2c in 20ug of human brain lysate (Lanes 2) with Alpha 2c polyclonal at 1:1000 dilution followed by AP-conjugated secondary at 1:5000 dilution. MW marker in Lane 1.



Alpha 2C staining in rat ventral spinal cord. Detection was done using HRP-AEC staining reagents (red color), and tissues were counterstained with hematoxylin (blue color). Working dilution is 1:100-1:300