

Product datasheet for **TA309563**

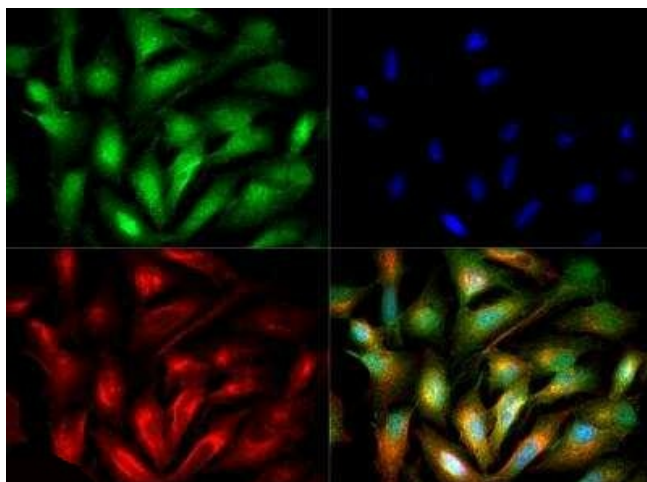
ACSL1 Rabbit Polyclonal Antibody

Product data:

Product Type:	Primary Antibodies
Applications:	ICC/IF, Simple Western, WB
Recommended Dilution:	Simple Western: 1:100, Western Blot: 1 ug/ml, Immunocytochemistry/ Immunofluorescence: 1:25 - 1:100
Reactivity:	Human, Mouse, Primate, Rat
Host:	Rabbit
Clonality:	Polyclonal
Immunogen:	Synthetic peptide made to an N-terminal portion of the human ACSL1 protein (within residues 1-100). [Swiss-Prot# P33121]
Formulation:	PBS, 30% glycerol and 0.1% Sodium Azide
Concentration:	lot specific
Purification:	Peptide affinity purified
Conjugation:	Unconjugated
Storage:	Store at -20°C as received.
Stability:	Stable for 12 months from date of receipt.
Gene Name:	acyl-CoA synthetase long-chain family member 1
Database Link:	NP_001986 Entrez Gene 14081 Mouse Entrez Gene 25288 Rat Entrez Gene 2180 Human P33121
Synonyms:	ACS1; FACL1; FACL2; LACS; LACS1; LACS2
Protein Families:	Transmembrane
Protein Pathways:	Adipocytokine signaling pathway, Fatty acid metabolism, Metabolic pathways, PPAR signaling pathway



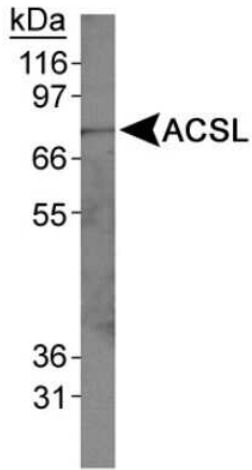
[View online »](#)

Product images:

Immunocytochemistry/Immunofluorescence: ACSL1 Antibody TA309563 - ACSL1 antibody was tested in HepG2 cells with DyLight 488 (green). Nuclei and alpha-tubulin were counterstained with DAPI (blue) and Dylight 550 (red).



Simple Western: ACSL1 Antibody TA309563 - Simple Western lane view shows a specific band for ACSL1 in 0.5 mg/ml of HepG2 lysate. This experiment was performed under reducing conditions using the 12-230 kDa separation system.



Western Blot: ACSL1 Antibody TA309563 -
Detection of ACSL in HepG2 whole cell lysates.