

## Product datasheet for **TA309558**

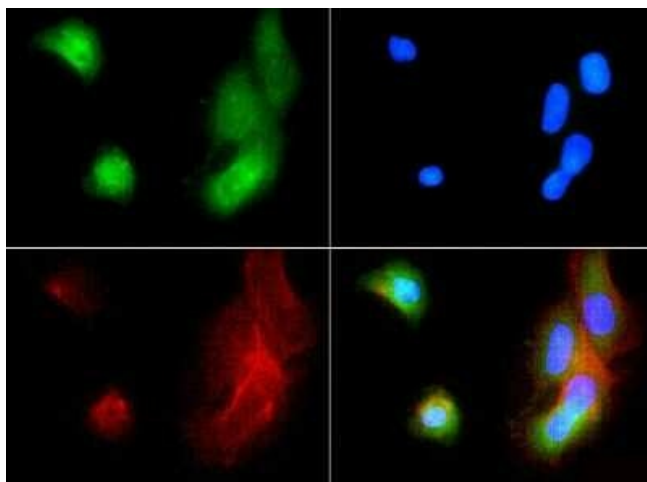
### ABCB5 Rabbit Polyclonal Antibody

#### Product data:

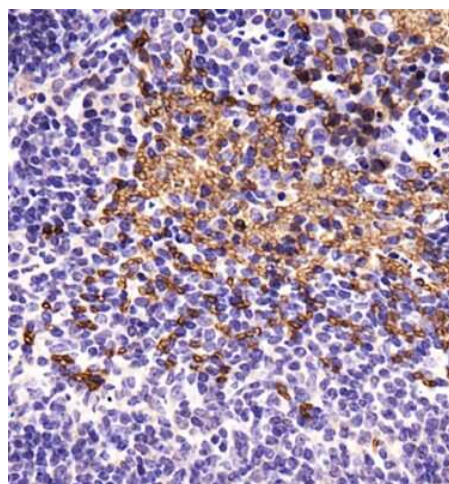
Product Type:	Primary Antibodies
Applications:	ICC/IF, IHC, WB
Recommended Dilution:	Western Blot, Immunohistochemistry-Paraffin: 1:200, Immunohistochemistry: 1:200, Immunocytochemistry/ Immunofluorescence: 1:100
Reactivity:	Human, Mouse
Host:	Rabbit
Clonality:	Polyclonal
Immunogen:	A synthetic peptide made to an internal portion of the human ABCB5 protein (between residues 450-500) [UniProt Q2M3G0]
Formulation:	PBS, 30% glycerol and 0.05% Sodium Azide
Concentration:	lot specific
Purification:	Affinity purified
Conjugation:	Unconjugated
Storage:	Store at -20°C as received.
Stability:	Stable for 12 months from date of receipt.
Gene Name:	ATP binding cassette subfamily B member 5
Database Link:	<a href="#">NP_848654</a> <a href="#">Entrez Gene 77706 Mouse</a> <a href="#">Entrez Gene 340273 Human</a> <a href="#">Q2M3G0</a>
Synonyms:	ABCB5alpha; ABCB5beta; EST422562
Protein Families:	Druggable Genome, Transmembrane
Protein Pathways:	ABC transporters



[View online »](#)

**Product images:**

Immunocytochemistry/Immunofluorescence: ABCB5 Antibody TA309558 - ABCB5 antibody was tested in A431 cells with FITC (green). Nuclei and actin were counterstained with DAPI (blue) and Phalloidin (red).



Immunohistochemistry: ABCB5 Antibody TA309558 - Analysis of ABCB5 in mouse spleen using DAB with hematoxylin counterstain.