

Product datasheet for **TA309556**

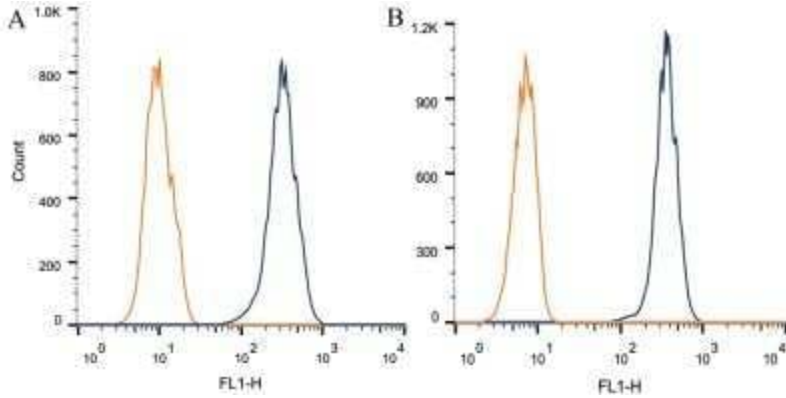
ABCA1 Mouse Monoclonal Antibody [Clone ID: HJ1]

Product data:

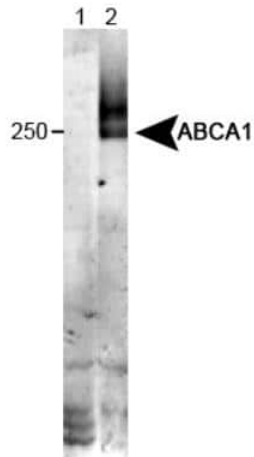
Product Type:	Primary Antibodies
Clone Name:	HJ1
Applications:	CyTOF-ready, FC, ICC/IF, IHC, WB
Recommended Dilution:	Immunohistochemistry: 1:400, Western Blot: 1:2000, Immunohistochemistry-Paraffin: 1:400, Flow Cytometry: 1 ug per million cells, Immunocytochemistry/ Immunofluorescence, CyTOF-ready
Reactivity:	Human, Mouse, Rat
Host:	Mouse
Clonality:	Monoclonal
Immunogen:	50 kDa N-terminal extracellular loop of ABCA1
Formulation:	PBS containing protease inhibitors and Sodium Azide
Purification:	Protein G purified
Conjugation:	Unconjugated
Storage:	Store at -20°C as received.
Stability:	Stable for 12 months from date of receipt.
Gene Name:	ATP binding cassette subfamily A member 1
Database Link:	NP_005493 Entrez Gene 11303 Mouse Entrez Gene 313210 Rat Entrez Gene 19 Human O95477
Synonyms:	ABC-1; ABC1; CERP; HDLDT1; TGD
Protein Families:	Druggable Genome, Transmembrane
Protein Pathways:	ABC transporters



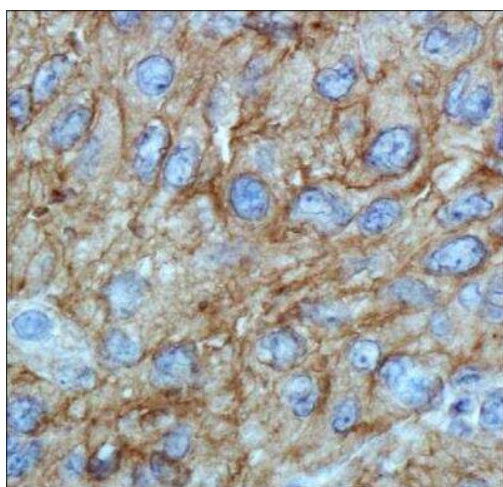
[View online »](#)

Product images:


Flow Cytometry: ABCA1 Antibody (HJ1) TA309556 - Staining of 1×10^6 CHO (A) and HEK-293 (B) cells using ABCA1 antibody (dark blue). Isotype control shown in orange. An antibody concentration of 1 ug/ 1×10^6 cells was used.



Western Blot: ABCA1 Antibody (HJ1) TA309556 - Detection of ABCA1 in wildtype liver tissue (in RIPA) Lane 1: KO mouse liver tissue. Lane 2: WT mouse liver tissue.



Immunohistochemistry: ABCA1 Antibody (HJ1)
TA309556 - Analysis of ABCA1 in human renal
cancer using DAB with hematoxylin counterstain.