

Product datasheet for **TA309555**

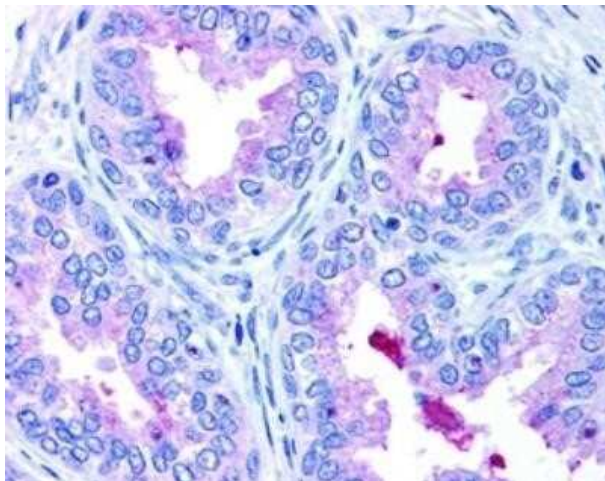
ABCA1 Rabbit Polyclonal Antibody

Product data:

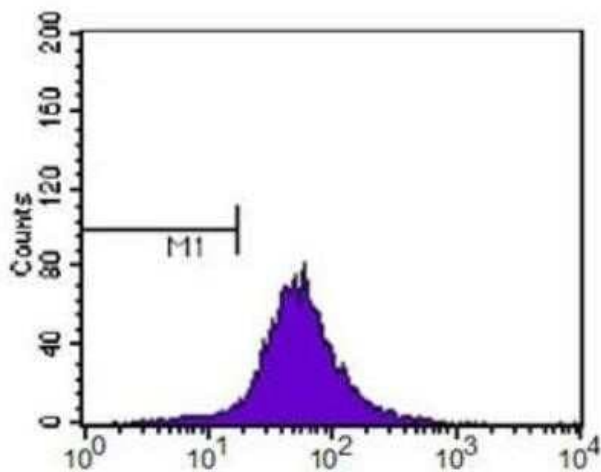
Product Type:	Primary Antibodies
Applications:	Block/Neutralize, ChIP, ELISA, FC, ICC/IF, IHC, Immunoblotting, IP, Simple Western, WB
Recommended Dilution:	Simple Western: 1:50, Gel Supershift Assay, Immunohistochemistry-Paraffin: 1:200, Immunohistochemistry-Frozen, Immunohistochemistry: 1:200, Western Blot: 1:500, Dual RNAscope ISH-IHC, Flow Cytometry: 1:400, Immunocytochemistry/ Immunofluorescence: 1:100, Immunoprecipitation: 1:10-1:500, Gel Super Shift Assays, Immunoblotting, Block/Neutralize, PCR, Chromatin Immunoprecipitation, ELISA, Knockdown Validated, Knockout Validated, Chromatin Immunoprecipitation (ChIP)
Reactivity:	Human, Mouse, Rat, Hamster
Host:	Rabbit
Clonality:	Polyclonal
Immunogen:	Partial peptide sequence (peptide used resides somewhere between a.a 1100-1300) of the human ABCA1 gene. Actual immunogen sequence is proprietary information.
Formulation:	Tris-citrate pH 7-8 and 0.02% Sodium Azide
Concentration:	lot specific
Purification:	Affinity purified
Conjugation:	Unconjugated
Storage:	Store at -20°C as received.
Stability:	Stable for 12 months from date of receipt.
Gene Name:	ATP binding cassette subfamily A member 1
Database Link:	NP_005493 Entrez Gene 11303 Mouse Entrez Gene 313210 Rat Entrez Gene 19 Human O95477
Synonyms:	ABC-1; ABC1; CERP; HDLDT1; TGD
Protein Families:	Druggable Genome, Transmembrane
Protein Pathways:	ABC transporters



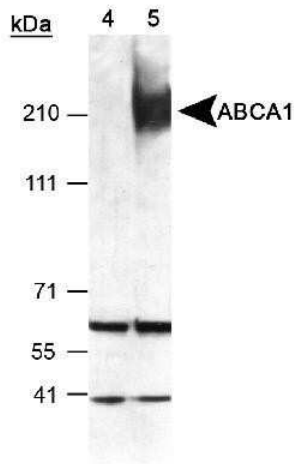
[View online »](#)

Product images:

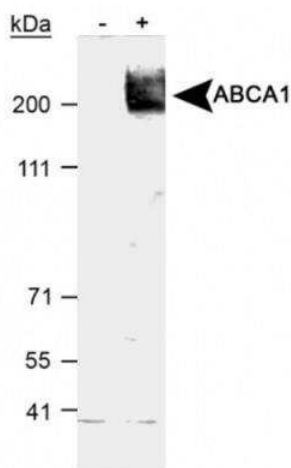
Detection of ABCA1 in human prostate epithelium showing luminal and membrane staining.



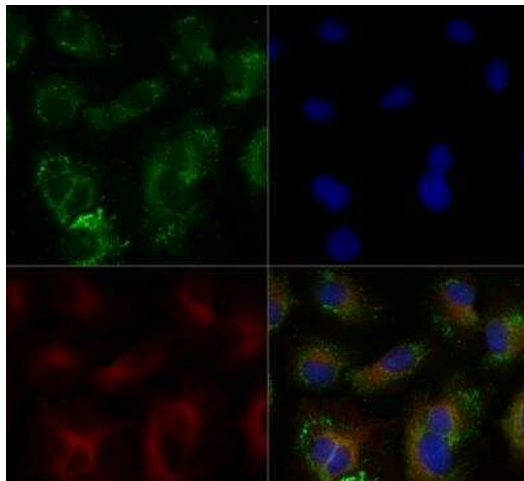
ABCA1 antibody was tested at 1: 400 in HeLa cells using an Alexa Fluor 488 secondary (shown in purple). M1 is defined by unstained cells.



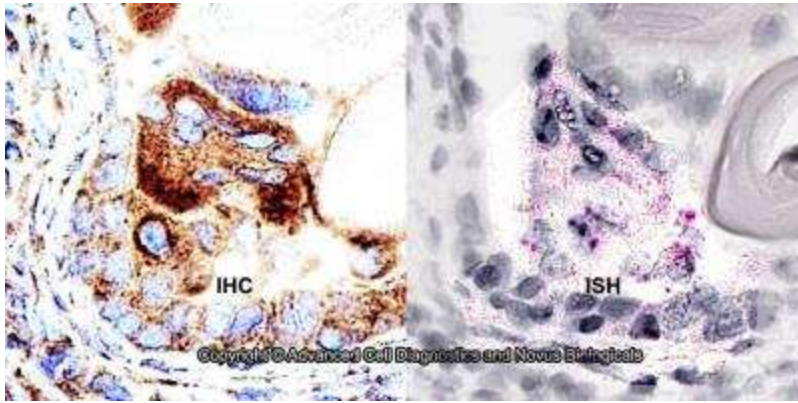
Detection of ABCA1 in mouse peritoneal macrophages using NB 400-105 (Lot L). ECL exposure, 1 min. Lane 4: T09 uninduced lysate
Lane 5: T09 induced lysate.



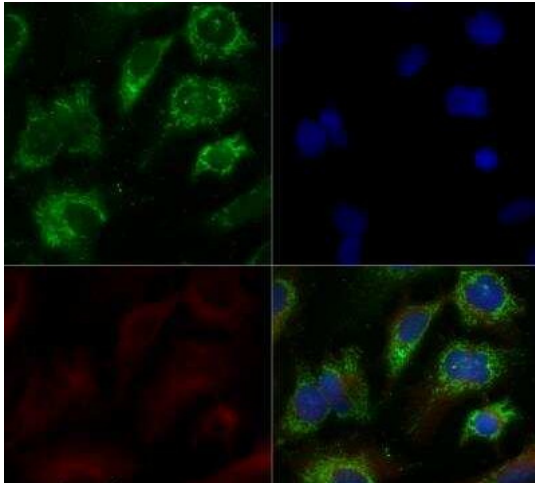
Analysis of ABCA1 in total cell lysates of RAW264.9 cells treated with vehicle (-) or 9-cisretinoic acid and 22Rhydroxycholesterol (+). Samples used for this testing were 40 ug of total cell post-nuclear lysate from each group.



Untreated HepG2 cells were grown to 60% confluency, and serum starved for 24 hours prior to being fixed for 10 minutes using 10% formalin and then permeabilized for 5 minutes using 1X TBS + 0.5% Triton-X100. The cells were incubated with anti-ABCA1 at 5.0ug/ml overnight at 4C and detected with an anti-rabbit Dylight 488 (Green) at a 1:500 dilution. Alpha tubulin (DM1A) NB100-690 was used as a co-stain at a 1:1000 dilution and detected with an anti-mouse Dylight 550 (Red) at a 1:500 dilution. Nuclei were counterstained with DAPI (Blue). Cells were imaged using a 40X objective.



Formalin-fixed paraffin-embedded tissue sections of human prostate cancer were probed for ABCA1 mRNA (ACD RNAScope Probe, catalog # 432291; Fast Red chromogen, ACD catalog # 322360). Adjacent tissue section was processed for immunohistochemistry using rabbit polyclonal (Novus Biologicals catalog # TA309555) at 1.5ug/mL with overnight incubation at 4 degrees Celsius followed by incubation with anti-rabbit IgG VisUcyte HRP Polymer Antibody (Catalog # VC003) and DAB chromogen (yellow-brown). Tissue was counterstained with hematoxylin (blue). Specific staining was localized to glandular cells.



HepG2 cells were grown to 60% confluency, serum starved for 24 hours, and then treated with 1uM TO9 for 24 hours prior to being fixed with 10% formalin and then permeabilized for 5 minutes using 1X TBS + 0.5% Triton-X100. The cells were incubated with anti-ABCA1 at 5.0ug/ml overnight at 4C and detected with an anti-rabbit Dylight 488 (Green) at a 1:500 dilution. Alpha tubulin (DM1A) NB100-690 was used as a co-stain at a 1:1000 dilution and detected with an anti-mouse Dylight 550 (Red) at a 1:500 dilution. Nuclei were counterstained with DAPI (Blue). Cells were imaged using a 40X objective.