

Product datasheet for **TA309550**

Slc5a1 Goat Polyclonal Antibody

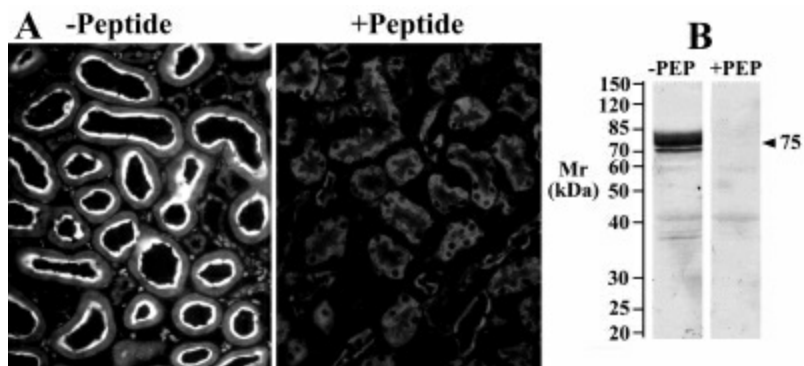
Product data:

Product Type:	Primary Antibodies
Applications:	WB
Recommended Dilution:	ELISA
Reactivity:	Rat
Host:	Goat
Clonality:	Polyclonal
Immunogen:	Peptide with sequence C-KDTIEIDAEAPQKEK, from the internal region of the protein sequence according to NP_037165.1.
Formulation:	Supplied at 0.5 mg/ml in Tris saline, 0.02% sodium azide, pH7.3 with 0.5% bovine serum albumin.
Purification:	Purified from goat serum by ammonium sulphate precipitation followed by antigen affinity chromatography using the immunizing peptide.
Conjugation:	Unconjugated
Storage:	Store at -20°C as received.
Stability:	Stable for 12 months from date of receipt.
Gene Name:	solute carrier family 5 member 1
Database Link:	NP_037165 Entrez Gene 25552 Rat P53790
Background:	This gene encodes a member of the sodium-dependent glucose transporter (SGLT) family. The encoded integral membrane protein is the primary mediator of dietary glucose and galactose uptake from the intestinal lumen. Mutations in this gene have been associated with glucose-galactose malabsorption.
Synonyms:	D22S675; NAGT; SGLT1

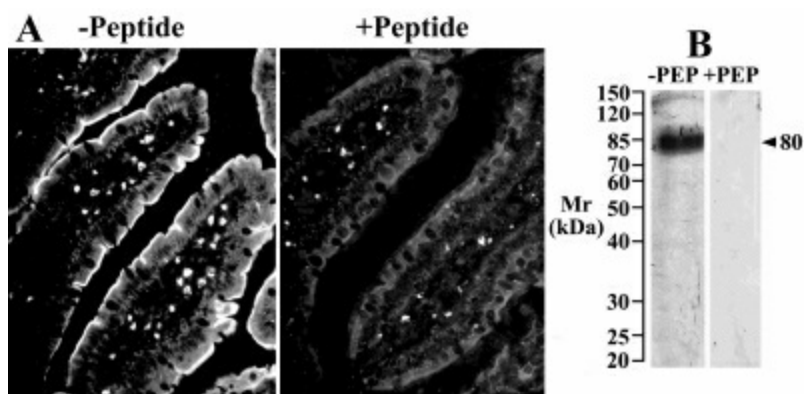


[View online »](#)

Product images:



TA309550 (2.5ug/ml) Western blot staining of Brush-border membranes from Rat Kidney. Primary incubation was 1 hour. Detected by chemiluminescence. TA309550 (25ug/ml) IHC staining of cryosections of Rat Kidney. Detection by CY3 fluorescence.



TA309550 (2.5ug/ml) Western blot staining of Brush-border membranes from Rat Small Intestines. Primary incubation was 1 hour. Detected by chemiluminescence. TA309550 (25ug/ml) IHC staining of cryosections of Rat Small Intestines. Detection by CY3 fluorescence.