

Product datasheet for **TA309549**

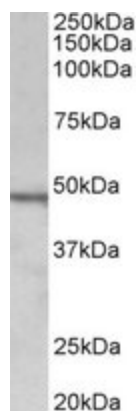
CHIT1 Goat Polyclonal Antibody

Product data:

Product Type:	Primary Antibodies
Applications:	WB
Recommended Dilution:	WB: 1-3ug/ml
Reactivity:	Human
Host:	Goat
Clonality:	Polyclonal
Immunogen:	Peptide with sequence EHGSPGQDTFCQGK, from the internal region (near C Terminus) of the protein sequence according to NP_003456.1.
Formulation:	Tris saline, 0.02% sodium azide, pH7.3 with 0.5% bovine serum albumin.
Concentration:	0.5 mg/ml
Purification:	Purified from goat serum by ammonium sulphate precipitation followed by antigen affinity chromatography using the immunizing peptide.
Conjugation:	Unconjugated
Storage:	Store at -20°C as received.
Stability:	Stable for 12 months from date of receipt.
Gene Name:	chitinase 1
Database Link:	NP_003456 Entrez Gene 1118 Human Q13231
Background:	Chitotriosidase is secreted by activated human macrophages and is markedly elevated in plasma of Gaucher disease patients. The expression of chitotriosidase occurs only at a late stage of differentiation of monocytes to activated macrophages in culture. Human macrophages can synthesize a functional chitotriosidase, a highly conserved enzyme with a strongly regulated expression. This enzyme may play a role in the degradation of chitin-containing pathogens. [provided by RefSeq]
Synonyms:	CHI3; CHIT; CHITD
Protein Families:	Secreted Protein, Transmembrane
Protein Pathways:	Amino sugar and nucleotide sugar metabolism



[View online »](#)

Product images:

TA309549 (1ug/ml) staining of Daudi lysate (35ug protein in RIPA buffer). Primary incubation was 1 hour. Detected by chemiluminescence.