

## Product datasheet for **TA309546**

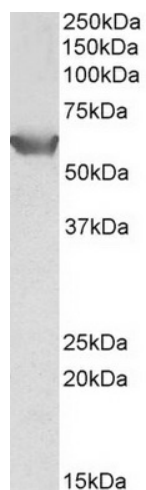
### SLC22A3 Goat Polyclonal Antibody

#### Product data:

Product Type:	Primary Antibodies
Applications:	WB
Recommended Dilution:	ELISA: 1:4,000. WB: 0.5-2ug/ml
Reactivity:	Human (Expected from sequence similarity: Mouse, Rat, Dog, Pig, Cow)
Host:	Goat
Clonality:	Polyclonal
Immunogen:	Peptide with sequence C-SNYSEITVTDEEVSN, from the internal region of the protein sequence according to NP_068812.1.
Formulation:	Supplied at 0.5 mg/ml in Tris saline, 0.02% sodium azide, pH7.3 with 0.5% bovine serum albumin.
Purification:	Purified from goat serum by ammonium sulphate precipitation followed by antigen affinity chromatography using the immunizing peptide.
Conjugation:	Unconjugated
Storage:	Store at -20°C as received.
Stability:	Stable for 12 months from date of receipt.
Gene Name:	solute carrier family 22 member 3
Database Link:	<a href="#">NP_068812</a> <a href="#">Entrez Gene 20519 Mouse</a> <a href="#">Entrez Gene 29504 Rat</a> <a href="#">Entrez Gene 476261 Dog</a> <a href="#">Entrez Gene 6581 Human</a> <a href="#">O75751</a>
Background:	Polyspecific organic cation transporters in the liver, kidney, intestine, and other organs are critical for elimination of many endogenous small organic cations as well as a wide array of drugs and environmental toxins. This gene is one of three similar cation transporter genes located in a cluster on chromosome 6. The encoded protein contains twelve putative transmembrane domains and is a plasma integral membrane protein. [provided by RefSeq]
Synonyms:	EMT; EMTH; OCT3
Protein Families:	Transmembrane



[View online »](#)

**Product images:**

TA309546 (0.5ug/ml) staining of HEK293 lysate (35ug protein in RIPA buffer). Primary incubation was 1 hour. Detected by chemiluminescence.