

Product datasheet for **TA309540**

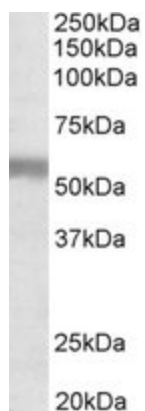
Natriuretic Peptide Receptor C (NPR3) Goat Polyclonal Antibody

Product data:

Product Type:	Primary Antibodies
Applications:	WB
Recommended Dilution:	WB: 1-3ug/ml
Reactivity:	Human (Expected from sequence similarity: Mouse, Rat, Dog, Pig, Cow)
Host:	Goat
Clonality:	Polyclonal
Immunogen:	Peptide with sequence C-HRELREDSIRSHFS, from the C Terminus of the protein sequence according to NP_000899.1.
Formulation:	Supplied at 0.5 mg/ml in Tris saline, 0.02% sodium azide, pH7.3 with 0.5% bovine serum albumin.
Purification:	Purified from goat serum by ammonium sulphate precipitation followed by antigen affinity chromatography using the immunizing peptide.
Conjugation:	Unconjugated
Storage:	Store at -20°C as received.
Stability:	Stable for 12 months from date of receipt.
Gene Name:	natriuretic peptide receptor 3
Database Link:	NP_000899 Entrez Gene 18162 Mouse Entrez Gene 25339 Rat Entrez Gene 612616 Dog Entrez Gene 4883 Human P17342
Background:	This gene encodes one of three natriuretic peptide receptors. Natriuretic peptides are small peptides which regulate blood volume and pressure, pulmonary hypertension, and cardiac function as well as some metabolic and growth processes. The product of this gene encodes a natriuretic peptide receptor responsible for clearing circulating and extracellular natriuretic peptides through endocytosis of the receptor. Multiple transcript variants encoding different isoforms have been found for this gene.
Synonyms:	ANP-C; ANPR-C; ANPRC; C5orf23; GUCY2B; NPR-C; NPRC
Protein Families:	Druggable Genome, Transmembrane



[View online »](#)

Product images:

TA309540 (1ug/ml) staining of Human Placenta lysate (35ug protein in RIPA buffer). Primary incubation was 1 hour. Detected by chemiluminescence.