

Product datasheet for **TA309535**

ATP2B1 Goat Polyclonal Antibody

Product data:

| | |
|-----------------------|---|
| Product Type: | Primary Antibodies |
| Applications: | WB |
| Recommended Dilution: | WB: 0.03-1ug/ml |
| Reactivity: | Human (Expected from sequence similarity: Mouse, Rat, Dog, Pig, Cow) |
| Host: | Goat |
| Clonality: | Polyclonal |
| Immunogen: | Peptide with sequence C-KQDGA IENRNKAKAQD, from the internal region of the protein sequence according to NP_001001323.1; NP_001673.2. |
| Formulation: | Supplied at 0.5 mg/ml in Tris saline, 0.02% sodium azide, pH7.3 with 0.5% bovine serum albumin. |
| Purification: | Purified from goat serum by ammonium sulphate precipitation followed by antigen affinity chromatography using the immunizing peptide. |
| Conjugation: | Unconjugated |
| Storage: | Store at -20°C as received. |
| Stability: | Stable for 12 months from date of receipt. |
| Gene Name: | ATPase plasma membrane Ca ²⁺ transporting 1 |
| Database Link: | NP_001673 Entrez Gene 29598 Rat Entrez Gene 67972 Mouse Entrez Gene 403480 Dog Entrez Gene 490 Human P20020 |



[View online »](#)

Background:

The protein encoded by this gene belongs to the family of P-type primary ion transport ATPases characterized by the formation of an aspartyl phosphate intermediate during the reaction cycle. These enzymes remove bivalent calcium ions from eukaryotic cells against very large concentration gradients and play a critical role in intracellular calcium homeostasis. The mammalian plasma membrane calcium ATPase isoforms are encoded by at least four separate genes and the diversity of these enzymes is further increased by alternative splicing of transcripts. The expression of different isoforms and splice variants is regulated in a developmental, tissue- and cell type-specific manner, suggesting that these pumps are functionally adapted to the physiological needs of particular cells and tissues. This gene encodes the plasma membrane calcium ATPase isoform 1. Alternatively spliced transcript variants encoding different isoforms have been identified. [provided by RefSeq]

Synonyms:

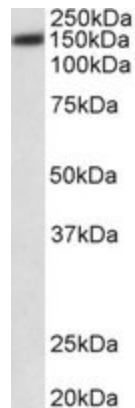
PMCA1; PMCA1kb

Protein Families:

Druggable Genome, Transmembrane

Protein Pathways:

Calcium signaling pathway

Product images:

TA309535 (0.03ug/ml) staining of HeLa lysate (35ug protein in RIPA buffer). Primary incubation was 1 hour. Detected by chemiluminescence.