

Product datasheet for **TA309533**

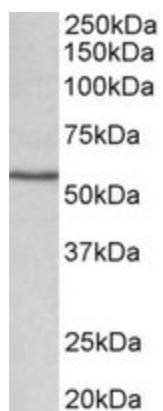
Cyp1a1 Goat Polyclonal Antibody

Product data:

Product Type:	Primary Antibodies
Applications:	WB
Recommended Dilution:	WB: 0.1-0.3ug/ml
Reactivity:	Rat (Expected from sequence similarity: Mouse)
Host:	Goat
Clonality:	Polyclonal
Immunogen:	Peptide with sequence C-QDRKLDENANVQLSD, from the internal region of the protein sequence according to NP_001129531.1.
Formulation:	Supplied at 0.5 mg/ml in Tris saline, 0.02% sodium azide, pH7.3 with 0.5% bovine serum albumin.
Purification:	Purified from goat serum by ammonium sulphate precipitation followed by antigen affinity chromatography using the immunizing peptide.
Conjugation:	Unconjugated
Storage:	Store at -20°C as received.
Stability:	Stable for 12 months from date of receipt.
Gene Name:	cytochrome P450, family 1, subfamily a, polypeptide 1
Database Link:	NP_034122 Entrez Gene 24296 Rat Entrez Gene 13076 Mouse P00184
Background:	This gene, CYP1A1, encodes a member of the cytochrome P450 superfamily of enzymes. The cytochrome P450 proteins are monooxygenases which catalyze many reactions involved in drug metabolism and synthesis of cholesterol, steroids and other lipids. This protein localizes to the endoplasmic reticulum and its expression is induced by some polycyclic aromatic hydrocarbons (PAHs), some of which are found in cigarette smoke. The enzyme's endogenous substrate is unknown; however, it is able to metabolize some PAHs to carcinogenic intermediates. The gene has been associated with lung cancer risk. A related family member, CYP1A2, is located approximately 25 kb away from CYP1A1 on chromosome 15. [provided by RefSeq]
Synonyms:	AHH; AHRR; CP11; CYP1; CYPIA1; OTTHUMP00000183469; P1-450; P450-C; P450-P1; P450DX



[View online »](#)

Product images:

TA309533 (0.1ug/ml) staining of Rat Lung lysate (35ug protein in RIPA buffer). Primary incubation was 1 hour. Detected by chemiluminescence.