

Product datasheet for TA309532

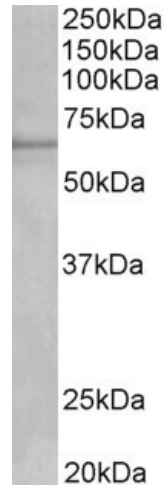
Cyp1a2 Goat Polyclonal Antibody

Product data:

Product Type:	Primary Antibodies
Applications:	PEP-ELISA, WB
Recommended Dilution:	WB: 1-3ug/ml
Reactivity:	Mouse (Expected from sequence similarity: Rat)
Host:	Goat
Clonality:	Polyclonal
Immunogen:	Peptide with sequence C-HSENYKDNGGLIPEEK, from the internal region of the protein sequence according to NP_034123.1.
Formulation:	Supplied at 0.5 mg/ml in Tris saline, 0.02% sodium azide, pH7.3 with 0.5% bovine serum albumin.
Purification:	Purified from goat serum by ammonium sulphate precipitation followed by antigen affinity chromatography using the immunizing peptide.
Conjugation:	Unconjugated
Storage:	Store at -20°C as received.
Stability:	Stable for 12 months from date of receipt.
Gene Name:	cytochrome P450, family 1, subfamily a, polypeptide 2
Database Link:	NP_034123 Entrez Gene 24297 Rat Entrez Gene 13077 Mouse P00186
Background:	This gene encodes a member of the cytochrome P450 superfamily of enzymes. The cytochrome P450 proteins are monooxygenases which catalyze many reactions involved in drug metabolism and synthesis of cholesterol, steroids and other lipids. The protein encoded by this gene localizes to the endoplasmic reticulum and its expression is induced by some polycyclic aromatic hydrocarbons (PAHs), some of which are found in cigarette smoke. The enzyme's endogenous substrate is unknown; however, it is able to metabolize some PAHs to carcinogenic intermediates. Other xenobiotic substrates for this enzyme include caffeine, aflatoxin B1, and acetaminophen. The transcript from this gene contains four Alu sequences flanked by direct repeats in the 3' untranslated region. [provided by RefSeq]
Synonyms:	CP12; CYPIA2; P(3)450; P3-450; P450(PA); P450-P3


[View online »](#)

Product images:



TA309532 (1ug/ml) staining of fetal Mouse Liver lysate (35ug protein in RIPA buffer). Primary incubation was 1 hour. Detected by chemiluminescence.



TA309532 (0.5ug/ml) staining of Human Liver (A) and (1ug/ml) Lung (B) lysate (35ug protein in RIPA buffer). Primary incubation was 1 hour. Detected by chemiluminescence.