

## Product datasheet for **TA309531**

### ANP (NPPA) Goat Polyclonal Antibody

#### Product data:

Product Type:	Primary Antibodies
Applications:	IHC, WB
Recommended Dilution:	<b>Western Blot:</b> Approx 19kDa band observed in Mouse and Rat Heart lysates (calculated MW of 16.4kDa according to Human precursor NP_006163.1 and 16.6kDa according to Mouse precursor NP_032751.1). Recommended concentration: 0.01-0.03µg/ml. <b>Immunohistochemistry:</b> In paraffin embedded Human Heart shows vesicular staining inside the cardiac fibrils, accumulating towards the cell membrane. Recommended concentration, 5-10µg/ml.
Reactivity:	Human, Mouse, Rat
Host:	Goat
Clonality:	Polyclonal
Immunogen:	Peptide with sequence RIGAQSGLGCSFR, from the C Terminus of the protein sequence according to NP_006163.1.
Formulation:	Supplied at 0.5 mg/ml in Tris saline, 0.02% sodium azide, pH7.3 with 0.5% bovine serum albumin.
Purification:	Purified from goat serum by ammonium sulphate precipitation followed by antigen affinity chromatography using the immunizing peptide.
Conjugation:	Unconjugated
Storage:	Store at -20°C as received.
Stability:	Stable for 12 months from date of receipt.
Gene Name:	natriuretic peptide A
Database Link:	<a href="#">NP_006163</a> <a href="#">Entrez Gene 24602 Rat</a> <a href="#">Entrez Gene 230899 Mouse</a> <a href="#">Entrez Gene 4878 Human</a> <a href="#">P01160</a>



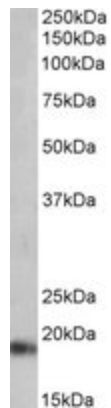
[View online »](#)

**Background:** The protein encoded by this gene belongs to the natriuretic peptide family. Natriuretic peptides are implicated in the control of extracellular fluid volume and electrolyte homeostasis. This protein is synthesized as a large precursor (containing a signal peptide), which is processed to release a peptide from the N-terminus with similarity to vasoactive peptide, cardiodilatin, and another peptide from the C-terminus with natriuretic-diuretic activity. Mutations in this gene have been associated with atrial fibrillation familial type 6. [provided by RefSeq]

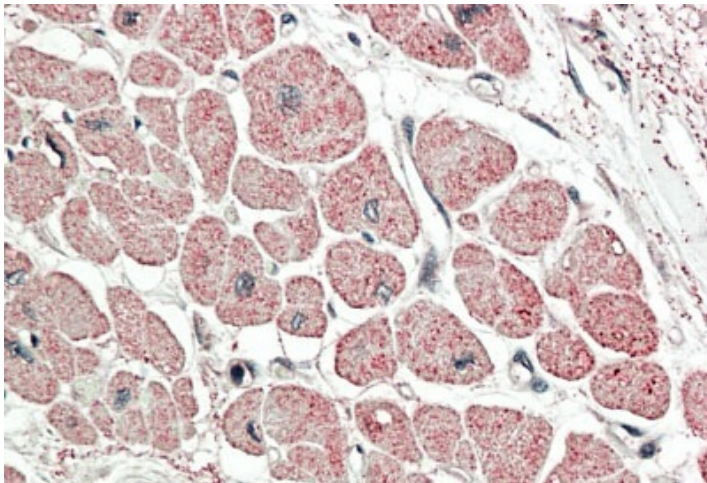
**Synonyms:** ANF; ANP; ATRST2; CDD; CDD-ANF; CDP; PND

**Protein Families:** Secreted Protein, Transmembrane

### Product images:



TA309531 (0.01ug/ml) staining of Mouse Heart lysate (35ug protein in RIPA buffer). Primary incubation was 1 hour. Detected by chemiluminescence.



Anti-NPPA antibody (5ug/ml) staining of paraffin embedded Human Heart. Steamed antigen retrieval with citrate buffer pH 6, AP-staining.