

## Product datasheet for **TA309526**

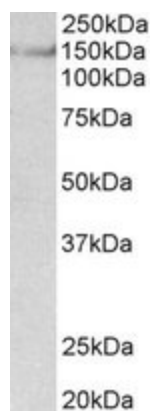
### SynGAP (SYNGAP1) Goat Polyclonal Antibody

#### Product data:

Product Type:	Primary Antibodies
Applications:	WB
Recommended Dilution:	WB: 0.03-1ug/ml
Reactivity:	Mouse (Expected from sequence similarity: Human, Rat, Dog, Pig, Cow)
Host:	Goat
Clonality:	Polyclonal
Immunogen:	Peptide with sequence C-ESAHIEREEYKLKEY, from the internal region (near C Terminus) of the protein sequence according to NP_006763.2.
Formulation:	Supplied at 0.5 mg/ml in Tris saline, 0.02% sodium azide, pH7.3 with 0.5% bovine serum albumin.
Purification:	Purified from goat serum by ammonium sulphate precipitation followed by antigen affinity chromatography using the immunizing peptide.
Conjugation:	Unconjugated
Storage:	Store at -20°C as received.
Stability:	Stable for 12 months from date of receipt.
Gene Name:	synaptic Ras GTPase activating protein 1
Database Link:	<a href="#">NP_006763</a> <a href="#">Entrez Gene 192117 RatEntrez Gene 240057 MouseEntrez Gene 481742 DogEntrez Gene 8831 Human Q96PV0</a>
Background:	The protein encoded by this gene is a major component of the postsynaptic density (PSD), a group of proteins found associated with NMDA receptors at synapses. The encoded protein is phosphorylated by calmodulin-dependent protein kinase II and dephosphorylated by NMDA receptor activation. Defects in this gene are a cause of mental retardation autosomal dominant type 5 (MRD5). [provided by RefSeq]
Synonyms:	MRD5; RASA1; RASA5; SYNGAP
Protein Families:	Druggable Genome



[View online »](#)

**Product images:**

TA309526 (0.03ug/ml) staining of Mouse Brain lysate (35ug protein in RIPA buffer). Primary incubation was 1 hour. Detected by chemiluminescence.